

PARS2 Antibody

Catalog No: #39506

Orders: order@signalwayantibody.comSupport: tech@signalwayantibody.com

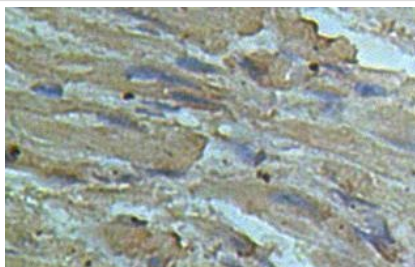
Description

Product Name	PARS2 Antibody
Host Species	Rabbit
Clonality	Polyclonal
Purification	Affinity purified
Applications	ELISA WB IHC
Species Reactivity	Hu Ms Rt
Target Name	PARS2
Concentration	1.0mg/ml
Formulation	PBS, pH 7.4 with 0.02% Sodium Azide
Storage	This product is stable for several weeks at 4°C as an undiluted liquid. Dilute only prior to immediate use. For extended storage, aliquot contents and freeze at -20°C or below. Avoid cycles of freezing and thawing. Expiration date is one (1) year from date of receipt.

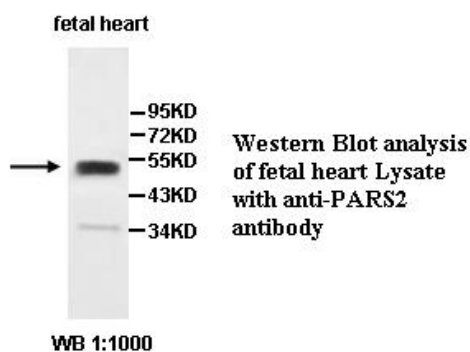
Application Details

ELISA WB IHC

Images



Immunohistochemical staining of formalin-fixed paraffin-embedded fetal heart showing cytoplasmic staining with anti-PARS2 antibody at a dilution of 1/100.



Note: This product is for in vitro research use only