

PDE6B Antibody

Catalog No: #39535

Orders: order@signalwayantibody.com

Support: tech@signalwayantibody.com

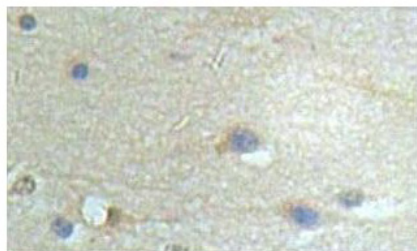
Description

| | |
|--------------------|--|
| Product Name | PDE6B Antibody |
| Host Species | Rabbit |
| Clonality | Polyclonal |
| Purification | Affinity purified |
| Applications | ELISA WB IHC |
| Species Reactivity | Hu Ms Rt |
| Target Name | PDE6B |
| Concentration | 1.0mg/ml |
| Formulation | PBS, pH 7.4 with 0.02% Sodium Azide |
| Storage | This product is stable for several weeks at 4°C as an undiluted liquid. Dilute only prior to immediate use. For extended storage, aliquot contents and freeze at -20°C or below. Avoid cycles of freezing and thawing. Expiration date is one (1) year from date of receipt. |

Application Details

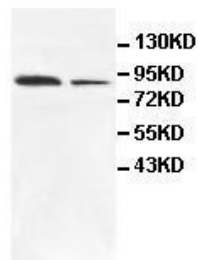
ELISA WB IHC

Images



Immunohistochemical staining of formalin-fixed paraffin-embedded fetal brain showing membrane staining with anti-PDE6B antibody at a dilution of 1/100.

fetal Jurkat
brain



Western Blot analysis of fetal brain and Jurkat cell Lysate with anti-PDE6B antibody

WB 1:500

Note: This product is for in vitro research use only