

Met (Ab-1234/1235) Antibody

Catalog No: #21685

Package Size: #21685-1 50ul #21685-2 100ul

Orders: order@signalwayantibody.comSupport: tech@signalwayantibody.com

Description

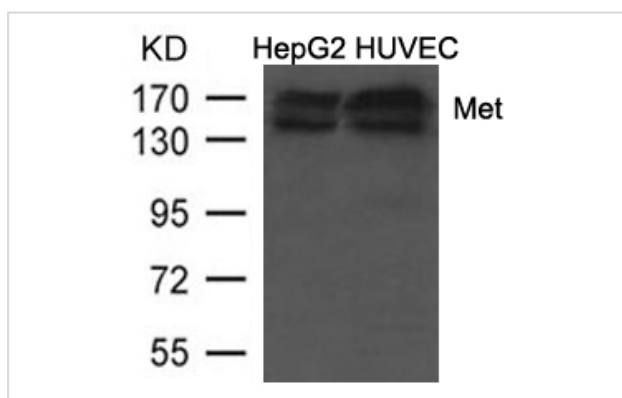
Product Name	Met (Ab-1234/1235) Antibody
Host Species	Rabbit
Clonality	Polyclonal
Applications	WB
Species Reactivity	Hu Ms Rt
Specificity	The antibody detects endogenous level of total Met protein.
Immunogen Type	Peptide-KLH
Immunogen Description	Peptide sequence around aa.1232-1237(K-E-Y-Y-S-V) derived from Human Met.
Target Name	Met
Other Names	HGF receptor, HGF-SF receptor, Met proto-oncogene tyrosine kinase, c-met, kinase Met
Accession No.	Swiss-Prot:P08581 Gene ID:4233
Uniprot	P08581
GeneID	4233;
Concentration	1.0mg/ml

Application Details

Predicted MW: 145, 170kd

Western blotting: 1: 500~1: 1000

Images



Western blot analysis of extracts from HepG2 and HUVEC cells using Met (Ab-1234/1235) Antibody #21685.

Background

Receptor for hepatocyte growth factor and scatter factor. Has a tyrosine-protein kinase activity. Functions in cell proliferation, scattering, morphogenesis and survival.

Note: This product is for in vitro research use only