

## ALOXE3 Antibody

Catalog No: #39620

Orders: order@signalwayantibody.com

Support: tech@signalwayantibody.com

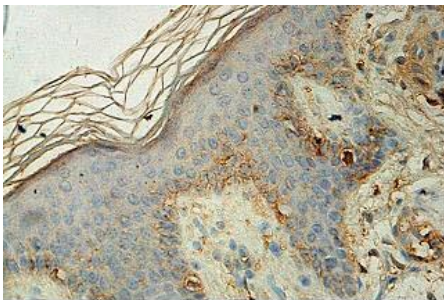
## Description

Product Name	ALOXE3 Antibody
Host Species	Rabbit
Purification	Affinity purified
Applications	ELISA WB IHC
Species Reactivity	Hu
Immunogen Type	Recombinant Protein
Immunogen Description	Raised against a recombinant human ALOXE3 protein 334-599aa (BC104724).
Target Name	ALOXE3
Concentration	1.0mg/ml
Formulation	PBS, pH 7.4 with 0.02% Sodium Azide
Storage	This product is stable for several weeks at 4°C as an undiluted liquid. Dilute only prior to immediate use. For extended storage, aliquot contents and freeze at -20°C or below. Avoid cycles of freezing and thawing. Expiration date is one (1) year from date of receipt.

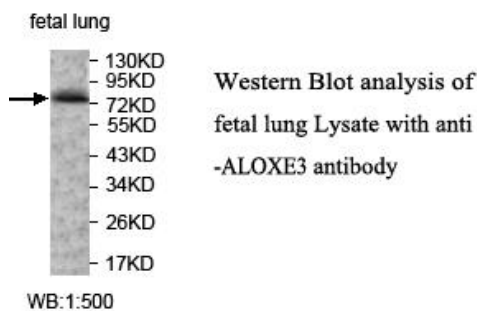
## Application Details

ELISA WB IHC

## Images



Immunohistochemical staining of formalin-fixed paraffin-embedded fetal skin staining with anti-ALOXE3 antibody at a dilution of 1/100.



Western Blot analysis of fetal lung Lysate with anti-ALOXE3 antibody

---

Note: This product is for in vitro research use only