

ZNF300 Antibody

Catalog No: #39632

Orders: order@signalwayantibody.com

Support: tech@signalwayantibody.com

Description

Product Name	ZNF300 Antibody
Host Species	Rabbit
Purification	Affinity purified
Applications	ELISA WB IHC
Species Reactivity	Hu
Immunogen Type	Recombinant Protein
Immunogen Description	Raised against a recombinant human ZNF300 protein 220-479aa (BC117248).
Target Name	ZNF300
Concentration	1.0mg/ml
Formulation	PBS, pH 7.4 with 0.02% Sodium Azide
Storage	This product is stable for several weeks at 4°C as an undiluted liquid. Dilute only prior to immediate use. For extended storage, aliquot contents and freeze at -20°C or below. Avoid cycles of freezing and thawing. Expiration date is one (1) year from date of receipt.

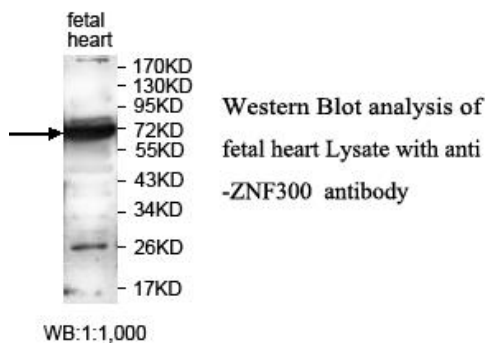
Application Details

ELISA WB IHC

Images



Immunohistochemical staining of formalin-fixed paraffin-embedded fetal brain showing nucleus staining with anti-ZNF300 antibody at a dilution of 1/100.



Note: This product is for in vitro research use only