

## SLC29A1 Antibody

Catalog No: #39642

Orders: [order@signalwayantibody.com](mailto:order@signalwayantibody.com)Support: [tech@signalwayantibody.com](mailto:tech@signalwayantibody.com)

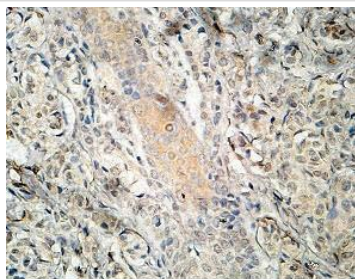
## Description

Product Name	SLC29A1 Antibody
Host Species	Rabbit
Purification	Affinity purified
Applications	ELISA WB IHC
Species Reactivity	Hu Ms Rt
Immunogen Type	Peptide-KLH
Immunogen Description	Raised against a peptide from N terminal residues of human SLC29A1 protein.
Target Name	SLC29A1
Concentration	1.0mg/ml
Formulation	PBS, pH 7.4 with 0.02% Sodium Azide
Storage	This product is stable for several weeks at 4°C as an undiluted liquid. Dilute only prior to immediate use. For extended storage, aliquot contents and freeze at -20°C or below. Avoid cycles of freezing and thawing. Expiration date is one (1) year from date of receipt.

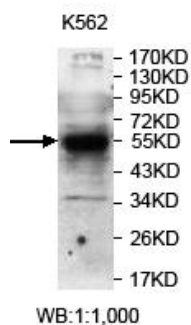
## Application Details

ELISA WB IHC

## Images



Immunohistochemical staining of formalin-fixed paraffin-embedded breast carcinoma showing membrane staining with anti-SLC29A1 antibody at a dilution of 1/100.



Western Blot analysis of K562 cell Lysate with anti-SLC29A1 antibody

---

Note: This product is for in vitro research use only