

KATNA1 Antibody

Catalog No: #39686

Orders: order@signalwayantibody.comSupport: tech@signalwayantibody.com

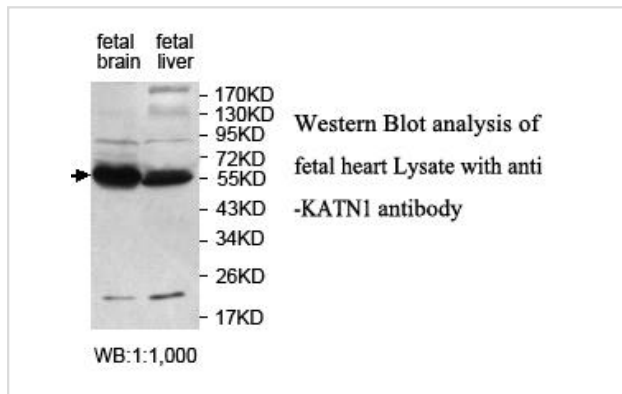
Description

Product Name	KATNA1 Antibody
Host Species	Rabbit
Purification	Affinity purified
Applications	ELISA WB
Species Reactivity	Hu
Immunogen Type	Recombinant Protein
Immunogen Description	Raised against a recombinant human KATNA1 protein 103-283aa (BC050428).
Target Name	KATNA1
Concentration	1.0mg/ml
Formulation	PBS, pH 7.4 with 0.02% Sodium Azide
Storage	This product is stable for several weeks at 4°C as an undiluted liquid. Dilute only prior to immediate use. For extended storage, aliquot contents and freeze at -20°C or below. Avoid cycles of freezing and thawing. Expiration date is one (1) year from date of receipt.

Application Details

ELISA WB

Images



Note: This product is for in vitro research use only