

# ANXA8L2 Antibody

Catalog No: #39703

Orders: [order@signalwayantibody.com](mailto:order@signalwayantibody.com)

Support: [tech@signalwayantibody.com](mailto:tech@signalwayantibody.com)

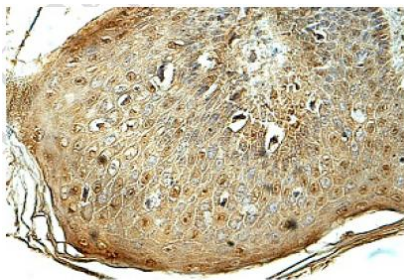
## Description

Product Name	ANXA8L2 Antibody
Host Species	Rabbit
Clonality	Polyclonal
Purification	Affinity purified
Applications	ELISA WB IHC
Species Reactivity	Hu Ms Rt
Immunogen Type	Recombinant Protein
Immunogen Description	raised against a recombinant human ANXA8L2 protein77-265aa (BC008813)
Target Name	ANXA8L2
Concentration	1.0mg/ml
Formulation	PBS, pH 7.4 with 0.02% Sodium Azide
Storage	This product is stable for several weeks at 4°C as an undiluted liquid. Dilute only prior to immediate use. For extended storage, aliquot contents and freeze at -20°C or below. Avoid cycles of freezing and thawing. Expiration date is one (1) year from date of receipt.

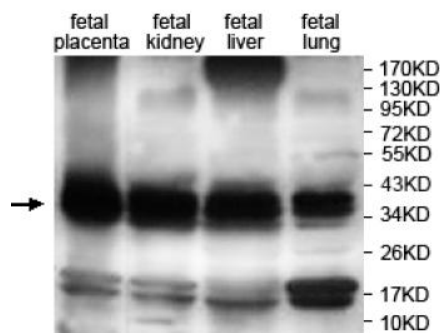
## Application Details

ELISA WB IHC

## Images



**Immunohistochemical staining of formalin-fixed paraffin-embedded fetal skin showing membrane staining with anti-ANXA8L2 antibody at a dilution of 1/100.**



---

Note: This product is for in vitro research use only