

# JHDM1D Antibody

Catalog No: #39707

Orders: [order@signalwayantibody.com](mailto:order@signalwayantibody.com)

Support: [tech@signalwayantibody.com](mailto:tech@signalwayantibody.com)

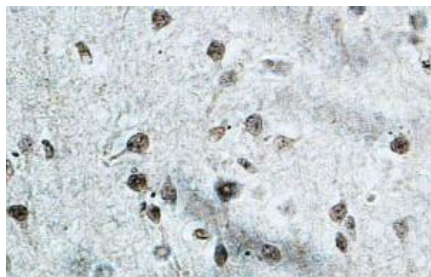
## Description

|                       |   |
|-----------------------|---|
| Product Name          | JHDM1D Antibody   |
| Host Species          | Rabbit  |
| Clonality             | Polyclonal  |
| Purification          | Affinity purified   |
| Applications          | ELISA WB IHC  |
| Species Reactivity    | Hu  |
| Immunogen Type        | Peptide-KLH   |
| Immunogen Description | raised against a peptide from 586-601 of human JHDM1D.  |
| Target Name           | JHDM1D  |
| Concentration         | 1.0mg/ml  |
| Formulation           | PBS, pH 7.4 with 0.02% Sodium Azide   |
| Storage               | This product is stable for several weeks at 4°C as an undiluted liquid. Dilute only prior to immediate use. For extended storage, aliquot contents and freeze at -20°C or below. Avoid cycles of freezing and thawing.<br>Expiration date is one (1) year from date of receipt. |

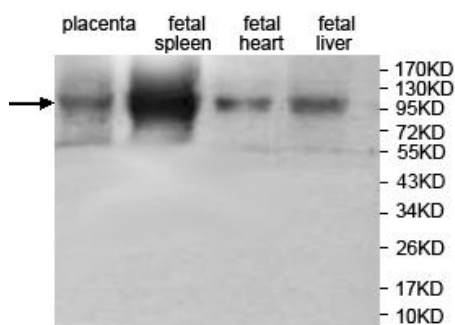
## Application Details

ELISA WB IHC

## Images



**Immunohistochemical staining of formalin-fixed paraffin-embedded fetal brain showing nuclear staining with anti-JHDM1D antibody at a dilution of 1/100.**



WB:1:1,000

---

Note: This product is for in vitro research use only