

PITPNM2 Antibody

Catalog No: #39711

Orders: order@signalwayantibody.comSupport: tech@signalwayantibody.com

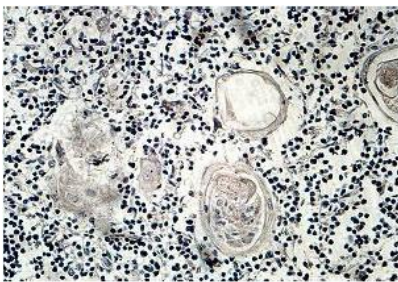
Description

Product Name	PITPNM2 Antibody
Host Species	Rabbit
Clonality	Polyclonal
Purification	Purified by antigen affinity column
Applications	ELISA WB IHC
Species Reactivity	Hu Ms Rt
Immunogen Type	Recombinant Protein
Immunogen Description	raised against a recombinant human PITPNM2 protein 162-435aa (BC141813)
Target Name	PITPNM2
Concentration	1.0mg/ml
Formulation	Reconstitute in 100ul of sterile H ₂ O with 50% glycerol 0.01% thiomersal.
Storage	This product is stable for several weeks at 4°C as an undiluted liquid. Dilute only prior to immediate use. For extended storage, aliquot contents and freeze at -20°C or below. Avoid cycles of freezing and thawing. Expiration date is one (1) year from date of receipt.

Application Details

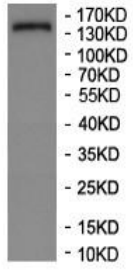
WB_oO 1:500-1:2,000IHC_oO 1:100-1:200ELISA_oO 1:20,000-1:80,000

Images



Immunohistochemical staining of formalin-fixed paraffin-embedded fetal thymus staining with anti-PITPNM2 antibody at a dilution of 1/100.

HEK-293



Western Blot analysis of
HEK-293 cell lysate with
anti-PITPNM2 antibody

Note: This product is for in vitro research use only