

ITM2A Antibody

Catalog No: #39726

Orders: order@signalwayantibody.comSupport: tech@signalwayantibody.com

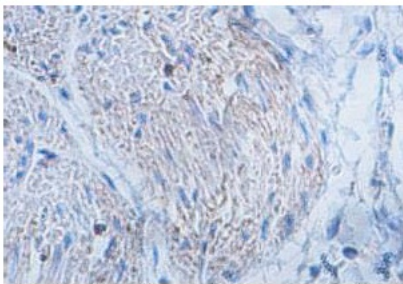
Description

Product Name	ITM2A Antibody
Host Species	Rabbit
Clonality	Polyclonal
Purification	Affinity purified
Applications	ELISA IHC
Specificity	Human and predicted against mouse and rat.
Immunogen Type	Recombinant Protein
Immunogen Description	Rabbit polyclonal ITM2A (1) antibody was raised against a recombinant human ITM2A protein 108-253aa (BC040437).
Target Name	ITM2A
Concentration	1.0mg/ml
Formulation	PBS, pH 7.4 with 0.02% Sodium Azide
Storage	This product is stable for several weeks at 4°C as an undiluted liquid. Dilute only prior to immediate use. For extended storage, aliquot contents and freeze at -20°C or below. Avoid cycles of freezing and thawing. Expiration date is one (1) year from date of receipt.

Application Details

ELISA: 1:20000-1:80000 IHC: 1:100-1:500

Images



Immunohistochemical staining of formalin-fixed paraffin-embedded fetal stomach showing membrane staining with anti-ITM2A antibody at a dilution of 1/100.

Note: This product is for in vitro research use only