

# LIN41 Antibody

Catalog No: #39754

Orders: [order@signalwayantibody.com](mailto:order@signalwayantibody.com)

Support: [tech@signalwayantibody.com](mailto:tech@signalwayantibody.com)

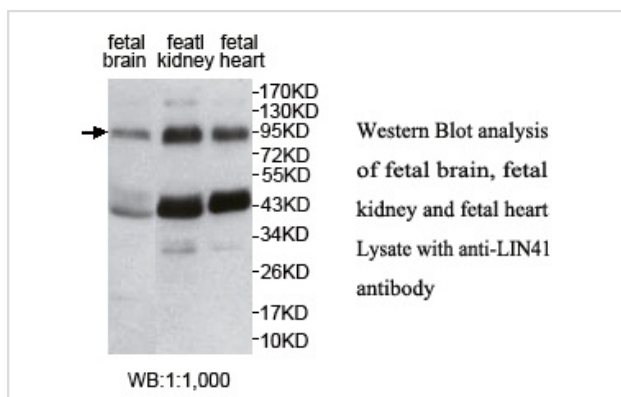
## Description

|                       |  |
|-----------------------|--|
| Product Name          | LIN41 Antibody   |
| Host Species          | Rabbit   |
| Clonality             | Polyclonal   |
| Purification          | Affinity purified  |
| Applications          | ELISA WB   |
| Specificity           | Human and predicted against mouse and rat.   |
| Immunogen Type        | Peptide-KLH  |
| Immunogen Description | Rabbit polyclonal LIN41 (1) antibody was raised against a peptide from N terminal residues of human LIN41 protein.   |
| Target Name           | LIN41  |
| Concentration         | 1.0mg/ml   |
| Formulation           | PBS, pH 7.4 with 0.02% Sodium Azide  |
| Storage               | This product is stable for several weeks at 4°C as an undiluted liquid. Dilute only prior to immediate use. For extended storage, aliquot contents and freeze at -20°C or below. Avoid cycles of freezing and thawing. Expiration date is one (1) year from date of receipt. |

## Application Details

ELISA: 1:20000-1:80000 WB: 1:1000-1:2000.

## Images



Note: This product is for in vitro research use only