

ZNF701 Antibody

Catalog No: #39761

Orders: order@signalwayantibody.comSupport: tech@signalwayantibody.com

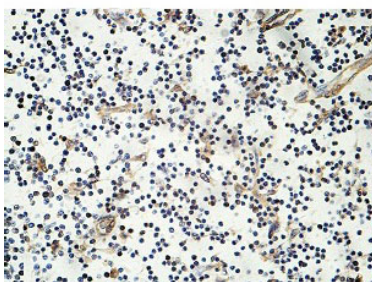
Description

| | |
|-----------------------|--|
| Product Name | ZNF701 Antibody |
| Host Species | Rabbit |
| Clonality | Polyclonal |
| Purification | Affinity purified |
| Applications | ELISA WB IHC |
| Specificity | Human and predicted against mouse and rat. |
| Immunogen Type | Recombinant Protein |
| Immunogen Description | Rabbit polyclonal ZNF701 (1) antibody was raised against a recombinant human ZNF701 protein 1-291aa (BC080612). |
| Target Name | ZNF701 |
| Concentration | 1.0mg/ml |
| Formulation | PBS, pH 7.4 with 0.02% Sodium Azide |
| Storage | This product is stable for several weeks at 4°C as an undiluted liquid. Dilute only prior to immediate use. For extended storage, aliquot contents and freeze at -20°C or below. Avoid cycles of freezing and thawing. Expiration date is one (1) year from date of receipt. |

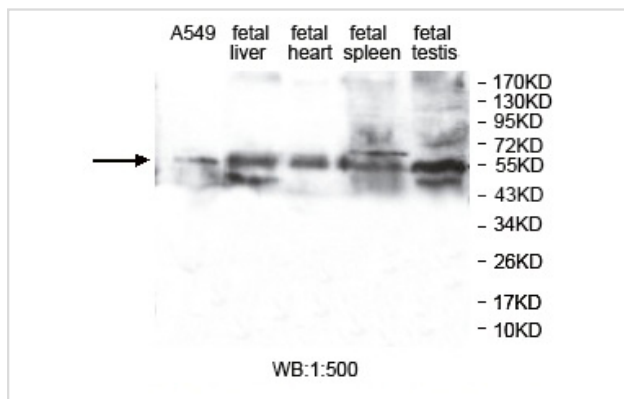
Application Details

ELISA: 1:20000-1:80000 WB: 1:500-1:1000 IHC: 1:100-1:500

Images



Immunohistochemical staining of formalin-fixed paraffin-embedded fetal lymphoma showing nuclear staining with anti-ZNF701 antibody at a dilution of 1/100.



Note: This product is for in vitro research use only