

## KATNAL2 Antibody

Catalog No: #39776

Orders: [order@signalwayantibody.com](mailto:order@signalwayantibody.com)Support: [tech@signalwayantibody.com](mailto:tech@signalwayantibody.com)

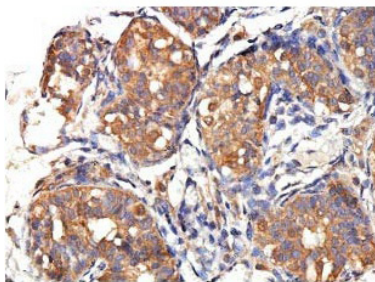
## Description

Product Name	KATNAL2 Antibody
Host Species	Rabbit
Clonality	Polyclonal
Purification	Affinity purified
Applications	ELISA WB IHC
Specificity	Human and predicted against mouse and rat.
Immunogen Type	Recombinant Protein
Immunogen Description	Rabbit polyclonal KATNAL2 (1) antibody was raised against a recombinant human KATNAL2 protein 263-424aa (BC034999).
Target Name	KATNAL2
Concentration	1.0mg/ml
Formulation	PBS, pH 7.4 with 0.02% Sodium Azide
Storage	This product is stable for several weeks at 4°C as an undiluted liquid. Dilute only prior to immediate use. For extended storage, aliquot contents and freeze at -20°C or below. Avoid cycles of freezing and thawing. Expiration date is one (1) year from date of receipt.

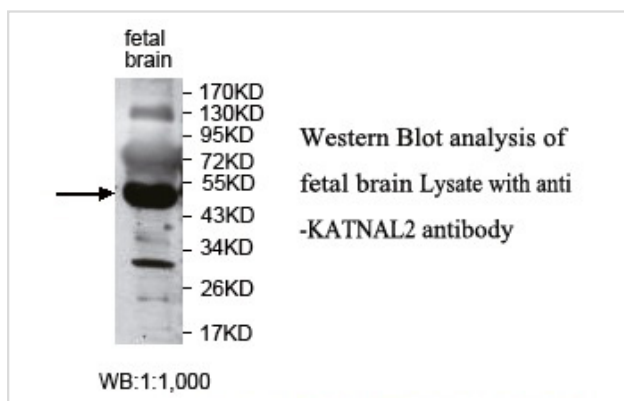
## Application Details

ELISA: 1:20000-1:80000 WB: 1:1000-1:2000 IHC: 1:100-1:500

## Images



Immunohistochemical staining of formalin-fixed paraffin-embedded fetal testis showing cytoplasmic staining with anti-KATNAL2 antibody at a dilution of 1/100



---

Note: This product is for in vitro research use only