

## ZFYVE16 Antibody

Catalog No: #39790

Orders: [order@signalwayantibody.com](mailto:order@signalwayantibody.com)Support: [tech@signalwayantibody.com](mailto:tech@signalwayantibody.com)

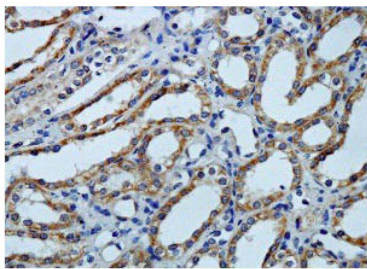
## Description

Product Name	ZFYVE16 Antibody
Host Species	Rabbit
Clonality	Polyclonal
Purification	Affinity purified
Applications	ELISA WB IHC
Specificity	Human and predicted against mouse and rat.
Immunogen Type	Recombinant Protein
Immunogen Description	Rabbit polyclonal ZFYVE16 (1) antibody was raised against a recombinant human ZFYVE16 protein 369-623aa (BC030808).
Target Name	ZFYVE16
Concentration	1.0mg/ml
Formulation	PBS, pH 7.4 with 0.02% Sodium Azide
Storage	This product is stable for several weeks at 4°C as an undiluted liquid. Dilute only prior to immediate use. For extended storage, aliquot contents and freeze at -20°C or below. Avoid cycles of freezing and thawing. Expiration date is one (1) year from date of receipt.

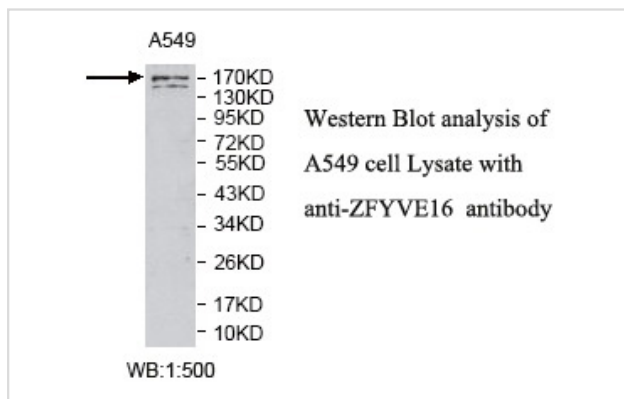
## Application Details

ELISA: 1:20000-1:80000 WB: 1:500-1:1000 IHC: 1:100-1:500

## Images



Immunohistochemical staining of formalin-fixed paraffin-embedded fetal kidney showing cytoplasmic staining with anti-ZFYVE16 antibody at a dilution of 1/100



---

Note: This product is for in vitro research use only