

ESD Antibody

Catalog No: #39801

Orders: order@signalwayantibody.comSupport: tech@signalwayantibody.com

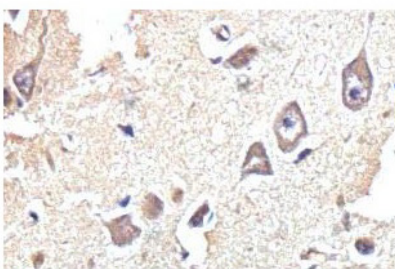
Description

Product Name	ESD Antibody
Host Species	Rabbit
Clonality	Polyclonal
Purification	Affinity purified
Applications	ELISA WB IHC
Specificity	Human and predicted against mouse and rat.
Immunogen Type	Recombinant Protein
Immunogen Description	Rabbit polyclonal ESD (1) antibody was raised against a recombinant human ESD protein 147-282 aa (BC001169).
Target Name	ESD
Concentration	1.0mg/ml
Formulation	PBS, pH 7.4 with 0.02% Sodium Azide
Storage	This product is stable for several weeks at 4°C as an undiluted liquid. Dilute only prior to immediate use. For extended storage, aliquot contents and freeze at -20°C or below. Avoid cycles of freezing and thawing. Expiration date is one (1) year from date of receipt.

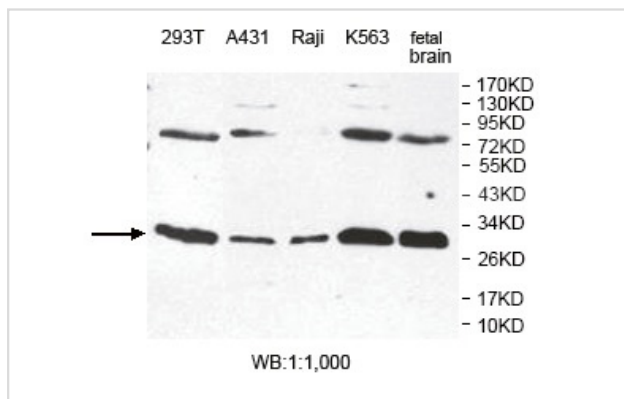
Application Details

ELISA: 1:20000-1:80000 WB: 1:1000-1:2000 IHC: 1:100-1:500

Images



Immunohistochemical staining of formalin-fixed paraffin-embedded fetal brain showing cytoplasmic staining with anti-ESD antibody at a dilution of 1/100



Note: This product is for in vitro research use only