

## DUSP16 Antibody

Catalog No: #39821

Orders: [order@signalwayantibody.com](mailto:order@signalwayantibody.com)Support: [tech@signalwayantibody.com](mailto:tech@signalwayantibody.com)

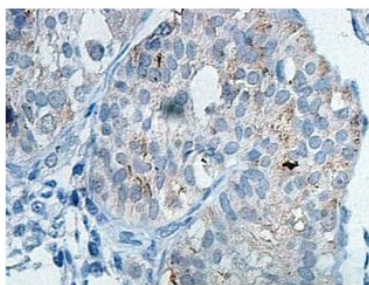
## Description

Product Name	DUSP16 Antibody
Host Species	Rabbit
Clonality	Polyclonal
Purification	Affinity purified
Applications	ELISA WB IHC
Species Reactivity	Hu Ms Rt
Immunogen Type	Recombinant Protein
Immunogen Description	Rabbit polyclonal DUSP16 (1) antibody was raised against a recombinated human DUSP16 protein 70-249aa (BC109234).
Target Name	DUSP16
Concentration	1.0mg/ml
Formulation	PBS, pH 7.4 with 0.02% Sodium Azide
Storage	This product is stable for several weeks at 4°C as an undiluted liquid. Dilute only prior to immediate use. For extended storage, aliquot contents and freeze at -20°C or below. Avoid cycles of freezing and thawing. Expiration date is one (1) year from date of receipt.

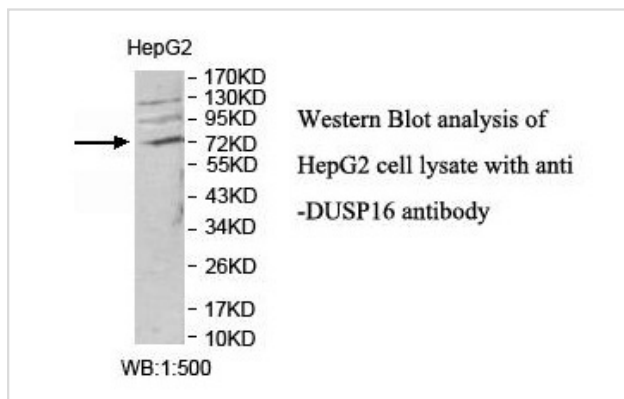
## Application Details

ELISA: 1:20000-1:80000 WB: 1:1000-1:2000 IHC: 1:100-1:500

## Images



**Immunohistochemical staining of formalin-fixed paraffin-embedded fetal testis showing cytoplasmic staining with anti-DUSP16 antibody at a dilution of 1/100**



---

Note: This product is for in vitro research use only