

## ARMCX5 Antibody

Catalog No: #39862

Orders: [order@signalwayantibody.com](mailto:order@signalwayantibody.com)Support: [tech@signalwayantibody.com](mailto:tech@signalwayantibody.com)

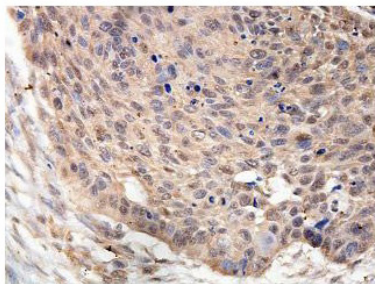
## Description

Product Name	ARMCX5 Antibody
Host Species	Rabbit
Clonality	Polyclonal
Purification	Affinity purified
Applications	ELISA WB IHC
Species Reactivity	Hu Ms Rt
Immunogen Type	Recombinant Protein
Immunogen Description	Rabbit polyclonal ARMCX5 (1) antibody was raised against a recombinated human ARMCX5 protein 338-512aa (BC058904).
Target Name	ARMCX5
Concentration	1.0mg/ml
Formulation	PBS, pH 7.4 with 0.02% Sodium Azide
Storage	This product is stable for several weeks at 4°C as an undiluted liquid. Dilute only prior to immediate use. For extended storage, aliquot contents and freeze at -20°C or below. Avoid cycles of freezing and thawing. Expiration date is one (1) year from date of receipt.

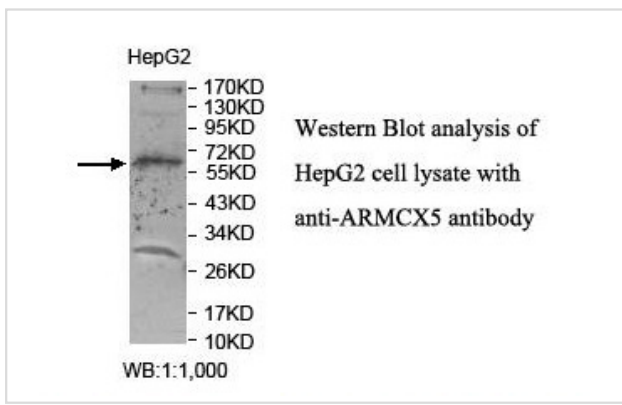
## Application Details

ELISA: 1:20000-1:80000 WB: 1:1000-1:2000 IHC: 1:100-1:500

## Images



**Immunohistochemical staining of formalin-fixed paraffin-embedded oesophageal carcinoma staining with anti-ARMCX5 antibody at a dilution of 1/100**



---

Note: This product is for in vitro research use only