

STOML2 Antibody

Catalog No: #39917

Orders: order@signalwayantibody.comSupport: tech@signalwayantibody.com

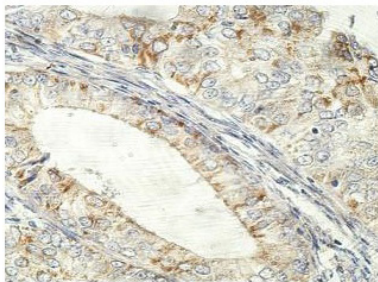
Description

Product Name	STOML2 Antibody
Host Species	Rabbit
Clonality	Polyclonal
Purification	Affinity purified
Applications	ELISA WB IHC
Species Reactivity	Hu Ms Rt
Immunogen Type	Recombinant Protein
Immunogen Description	Rabbit polyclonal STOML2 (1) antibody was raised against a recombinated human STOML2 protein 173-356aa (BC002442).
Target Name	STOML2
Concentration	1.0mg/ml
Formulation	PBS, pH 7.4 with 0.02% Sodium Azide
Storage	This product is stable for several weeks at 4°C as an undiluted liquid. Dilute only prior to immediate use. For extended storage, aliquot contents and freeze at -20°C or below. Avoid cycles of freezing and thawing. Expiration date is one (1) year from date of receipt.

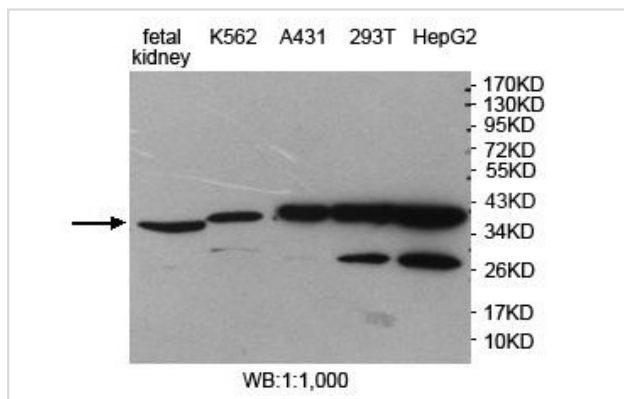
Application Details

ELISA: 1:20000-1:80000 WB: 1:1000-1:2000 IHC: 1:100-1:500

Images



Immunohistochemical staining of formalin-fixed paraffin-embedded endometrial cancer showing cytoplasmic staining with anti-STOML2 antibody at a dilution of 1/100



Note: This product is for in vitro research use only