

## ARAF Antibody

Catalog No: #39929

Orders: [order@signalwayantibody.com](mailto:order@signalwayantibody.com)Support: [tech@signalwayantibody.com](mailto:tech@signalwayantibody.com)

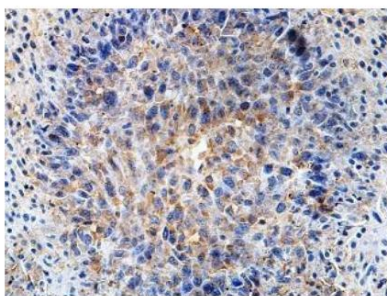
## Description

Product Name	ARAF Antibody
Host Species	Rabbit
Clonality	Polyclonal
Purification	Affinity purified
Applications	ELISA IHC
Species Reactivity	Hu Ms Rt
Immunogen Type	Recombinant Protein
Immunogen Description	Rabbit polyclonal ARAF(1) antibody was raised against a recombinant human ARAF protein 356-539aa (BC002466).
Target Name	ARAF
Concentration	1.0mg/ml
Formulation	PBS, pH 7.4 with 0.02% sodium azide.
Storage	This product is stable for several weeks at 4°C as an undiluted liquid. Dilute only prior to immediate use. For extended storage, aliquot contents and freeze at -20°C or below. Avoid cycles of freezing and thawing. Expiration date is one (1) year from date of receipt.

## Application Details

ELISA: 1:20000-1:80000 IHC: 1:100-1:500

## Images



**Immunohistochemical staining of formalin-fixed paraffin-embedded breast carcinoma staining with anti-ARAF antibody at a dilution of 1/100**

Note: This product is for in vitro research use only