

## ASGR2 Antibody

Catalog No: #39942

Orders: [order@signalwayantibody.com](mailto:order@signalwayantibody.com)Support: [tech@signalwayantibody.com](mailto:tech@signalwayantibody.com)

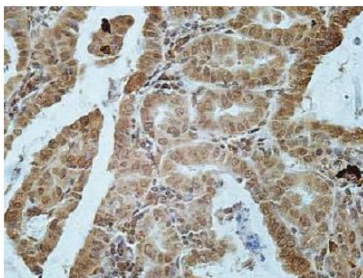
## Description

Product Name	ASGR2 Antibody
Host Species	Rabbit
Clonality	Polyclonal
Purification	Affinity purified
Applications	ELISA IHC
Species Reactivity	Hu Ms Rt
Immunogen Type	Recombinant Protein
Immunogen Description	Rabbit polyclonal ASGR2 (1) antibody was raised against a recombinant human ASGR2 protein 106-286aa (BC017251).
Target Name	ASGR2
Concentration	1.0mg/ml
Formulation	PBS, pH 7.4 with 0.02% sodium azide.
Storage	This product is stable for several weeks at 4°C as an undiluted liquid. Dilute only prior to immediate use. For extended storage, aliquot contents and freeze at -20°C or below. Avoid cycles of freezing and thawing. Expiration date is one (1) year from date of receipt.

## Application Details

ELISA: 1:20000-1:80000 IHC: 1:100-1:500

## Images



Immunohistochemical staining of formalin-fixed paraffin-embedded thyroid cancer showing membrane staining with anti-ASGR2 antibody at a dilution of 1/100

Note: This product is for in vitro research use only