

EIF2C3 Antibody

Catalog No: #39952

Orders: order@signalwayantibody.comSupport: tech@signalwayantibody.com

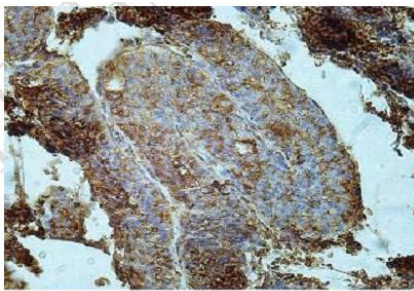
Description

Product Name	EIF2C3 Antibody
Host Species	Rabbit
Clonality	Polyclonal
Purification	Affinity purified
Applications	ELISA WB IHC
Species Reactivity	Hu Ms Rt
Immunogen Type	Peptide-KLH
Immunogen Description	Rabbit polyclonal EIF2C3(1) antibody was raised against a peptide from the intermediate residues of human EIF2C3 protein.
Target Name	EIF2C3
Concentration	1.0mg/ml
Formulation	PBS, pH 7.4 with 0.02% sodium azide.
Storage	This product is stable for several weeks at 4°C as an undiluted liquid. Dilute only prior to immediate use. For extended storage, aliquot contents and freeze at -20°C or below. Avoid cycles of freezing and thawing. Expiration date is one (1) year from date of receipt.

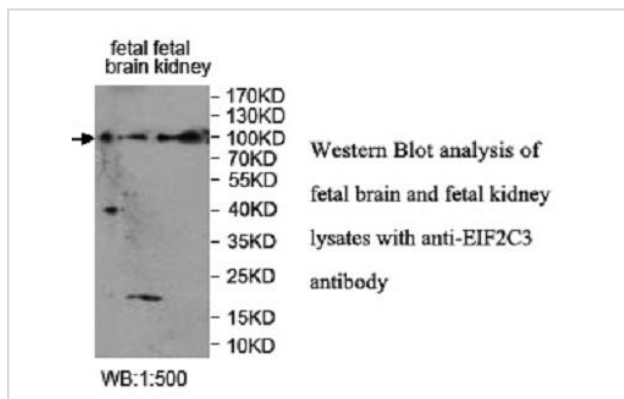
Application Details

ELISA: 1:20000-1:80000 WB: 1:500-1:1000 IHC: 1:100-1:500

Images



Immunohistochemical staining of formalin-fixed paraffin-embedded fetal testis showing cytoplasmic staining with anti-EIF2C3 antibody at a dilution of 1/100



Note: This product is for in vitro research use only