

EXTL2 Antibody

Catalog No: #40049

Orders: order@signalwayantibody.comSupport: tech@signalwayantibody.com

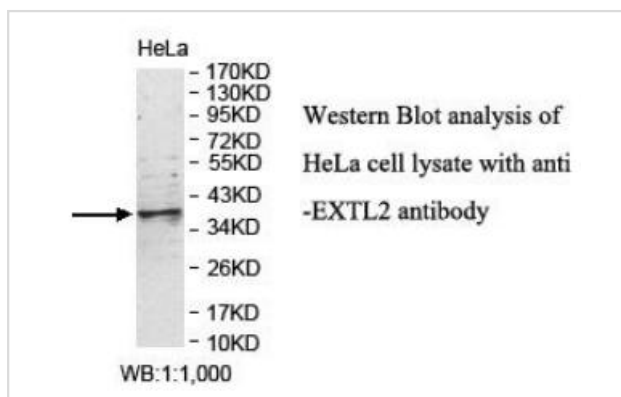
Description

Product Name	EXTL2 Antibody
Host Species	Rabbit
Clonality	Polyclonal
Purification	Affinity purified
Applications	ELISA WB
Species Reactivity	Hu Ms Rt
Immunogen Type	Recombinant Protein
Immunogen Description	Rabbit polyclonal EXTL2(1)antibody was raised against a recombinant human EXTL2 protein 165-310aa (BC045681)
Target Name	EXTL2
Concentration	1.0mg/ml
Formulation	PBS, pH 7.4 with 0.02% sodium azide.
Storage	This product is stable for several weeks at 4°C as an undiluted liquid. Dilute only prior to immediate use. For extended storage, aliquot contents and freeze at -20°C or below. Avoid cycles of freezing and thawing. Expiration date is one (1) year from date of receipt.

Application Details

ELISA: 1:20000-1:80000 WB: 1:200-1:1000

Images



Note: This product is for in vitro research use only