

TMPRSS7 Antibody

Catalog No: #40059

Orders: order@signalwayantibody.comSupport: tech@signalwayantibody.com

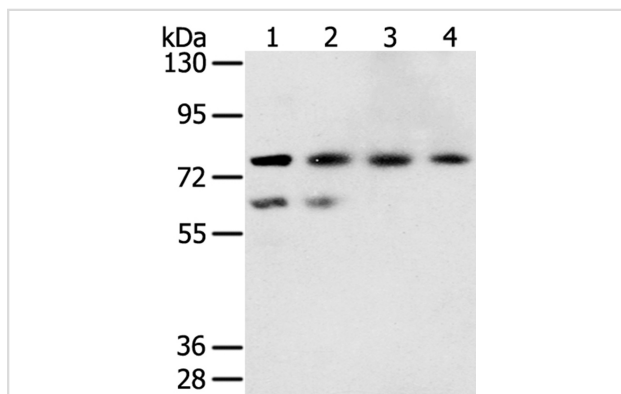
Description

Product Name	TMPRSS7 Antibody
Host Species	Rabbit
Clonality	Polyclonal
Purification	Antigen affinity purification.
Applications	WB
Species Reactivity	Hu
Specificity	The antibody detects endogenous levels of total TMPRSS7 protein.
Immunogen Type	Protein
Immunogen Description	Fusion protein corresponding to residues near the C terminal of human transmembrane protease, serine 7
Target Name	TMPRSS7
Accession No.	Swiss-Prot:Q7RTY8Gene Accssion:BC117322
Uniprot	Q7RTY8
GeneID	344805;
SDS-PAGE MW	94KD
Concentration	0.4mg/ml
Formulation	Rabbit IgG in pH7.4 PBS, 0.05% NaN ₃ , 40% Glycerol.
Storage	Store at -20°C

Application Details

Western blotting: 1:200-1:1000

Images



Gel: 6%SDS-PAGE

Lysates (from left to right): A549, hepg2, lovo and A431 cell

Amount of lysate: 40ug per lane

Primary antibody: 1/250 dilution

Secondary antibody dilution: 1/8000

Exposure time: 5 minutes

Background

Serine protease which preferentially hydrolyzes peptides with Arg at the P1 position. Expressed in brain, ovary, testis, salivary gland, trachea and lung.

Note: This product is for in vitro research use only