

CENPM Antibody

Catalog No: #40060

Orders: order@signalwayantibody.comSupport: tech@signalwayantibody.com

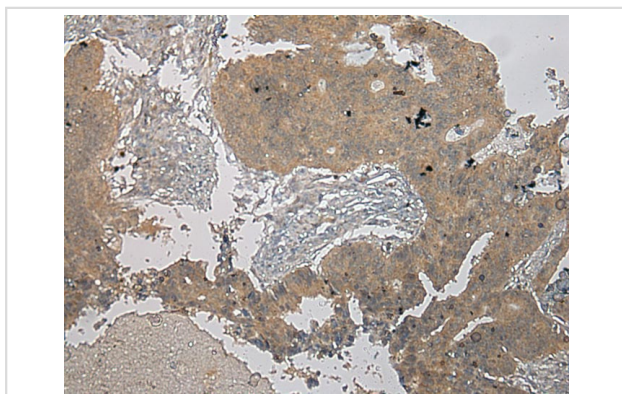
Description

Product Name	CENPM Antibody
Host Species	Rabbit
Clonality	Polyclonal
Purification	Antigen affinity purification.
Applications	IHC
Species Reactivity	Hu
Specificity	The antibody detects endogenous levels of total CENPM protein.
Immunogen Type	Protein
Immunogen Description	Full length fusion protein
Target Name	CENPM
Other Names	PANE1; CENP-M; C22orf18; bK250D10.2
Accession No.	Swiss-Prot:Q9NSP4Gene Accssion:BC000705
Uniprot	Q9NSP4
GeneID	79019;
Concentration	1.6mg/ml
Formulation	Rabbit IgG in pH7.4 PBS, 0.05% NaN ₃ , 40% Glycerol.
Storage	Store at -20°C

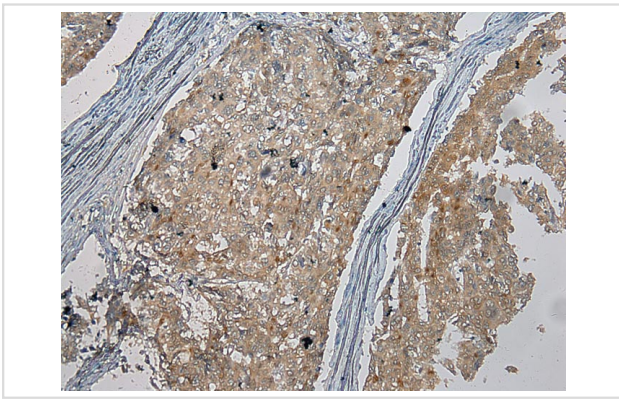
Application Details

Immunohistochemistry: 1:100-1:200

Images



Immunohistochemical analysis of paraffin-embedded Human Colorectal cancer tissue using #40060 at dilution 1/100.



Immunohistochemical analysis of paraffin-embedded Human Liver cancer tissue using #40060 at dilution 1/100.

Background

The centromere is a specialized chromatin domain, present throughout the cell cycle, that acts as a platform on which the transient assembly of the kinetochore occurs during mitosis. All active centromeres are characterized by the presence of long arrays of nucleosomes in which CENPA (MIM 117139) replaces histone H3 (see MIM 601128). CENPM is an additional factor required for centromere assembly (Foltz et al., 2006 [PubMed 16622419]).

Note: This product is for in vitro research use only