

## KDM8 Antibody

Catalog No: #40061

Orders: order@signalwayantibody.com

Support: tech@signalwayantibody.com

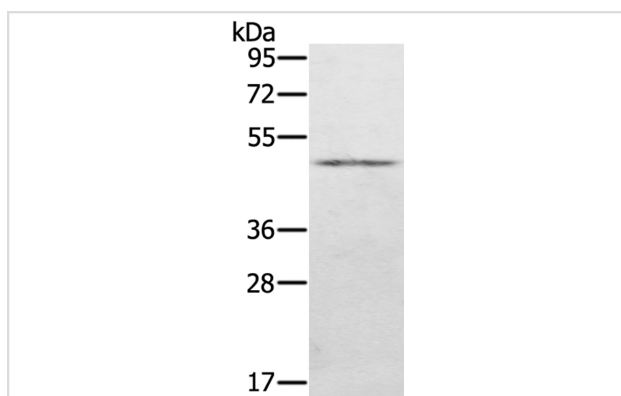
## Description

Product Name	KDM8 Antibody
Host Species	Rabbit
Clonality	Polyclonal
Purification	Antigen affinity purification.
Applications	WB
Species Reactivity	Hu
Specificity	The antibody detects endogenous levels of total KDM8 protein.
Immunogen Type	Protein
Immunogen Description	Fusion protein corresponding to residues near the C terminal of human lysine (K)-specific demethylase 8
Target Name	KDM8
Other Names	JMJD5
Accession No.	Swiss-Prot:Q8N371Gene Accssion:BC027911
Uniprot	Q8N371
GeneID	79831;
SDS-PAGE MW	47KD
Concentration	2.7mg/ml
Formulation	Rabbit IgG in pH7.4 PBS, 0.05% NaN <sub>3</sub> , 40% Glycerol.
Storage	Store at -20°C

## Application Details

Western blotting: 1:200-1:1000

## Images



Gel: 8%SDS-PAGE  
Lysate: 40ug Human normal stomach tissue  
Primary antibody: 1/500 dilution  
Secondary antibody dilution: 1/8000  
Exposure time: 3 minutes

## Background

This gene likely encodes a histone lysine demethylase. Studies of a similar protein in mouse indicate a potential role for this protein as a tumor suppressor. Alternatively spliced transcript variants have been described.

---

Note: This product is for in vitro research use only