

## OLFM4 Antibody

Catalog No: #40062

Orders: [order@signalwayantibody.com](mailto:order@signalwayantibody.com)Support: [tech@signalwayantibody.com](mailto:tech@signalwayantibody.com)

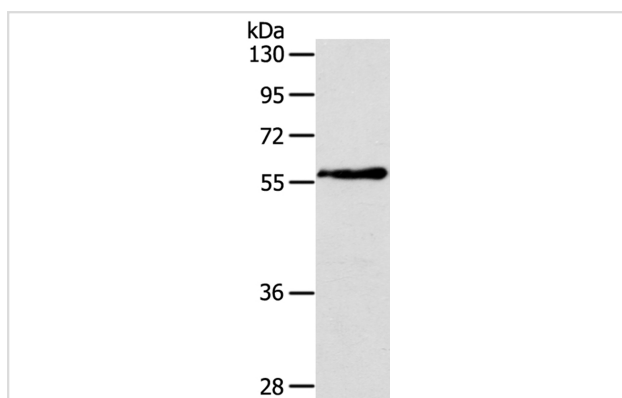
## Description

Product Name	OLFM4 Antibody
Host Species	Rabbit
Clonality	Polyclonal
Purification	Antigen affinity purification.
Applications	WB
Species Reactivity	Hu
Specificity	The antibody detects endogenous levels of total OLFM4 protein.
Immunogen Type	Protein
Immunogen Description	Fusion protein corresponding to residues near the C terminal of human olfactomedin 4
Target Name	OLFM4
Other Names	GC1; OLM4; OlfD; GW112; hGC-1; hOLfD; UNQ362; bA209J19.1
Accession No.	Swiss-Prot:Q6UX06Gene Accssion:BC117329
Uniprot	Q6UX06
GeneID	10562;
SDS-PAGE MW	57KD
Concentration	0.7mg/ml
Formulation	Rabbit IgG in pH7.4 PBS, 0.05% NaN <sub>3</sub> , 40% Glycerol.
Storage	Store at -20°C

## Application Details

Western blotting: 1:200-1:1000

## Images



Gel: 6%SDS-PAGE

Lysate: 40ug Human fetal liver tissue  
Primary antibody: 1/200 dilution

Secondary antibody dilution: 1/8000

Exposure time: 40 seconds

## Background

This gene was originally cloned from human myeloblasts and found to be selectively expressed in inflamed colonic epithelium. This gene encodes a member of the olfactomedin family. The encoded protein is an antiapoptotic factor that promotes tumor growth and is an extracellular matrix

glycoprotein that facilitates cell adhesion.

---

Note: This product is for in vitro research use only