

## TWF1 Antibody

Catalog No: #40064

Orders: [order@signalwayantibody.com](mailto:order@signalwayantibody.com)Support: [tech@signalwayantibody.com](mailto:tech@signalwayantibody.com)

## Description

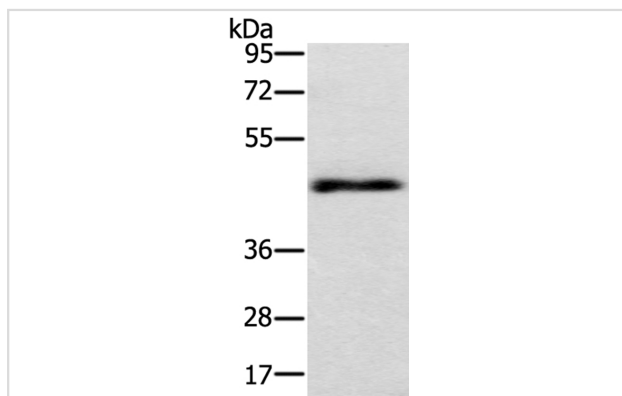
Product Name	TWF1 Antibody
Host Species	Rabbit
Clonality	Polyclonal
Purification	Antigen affinity purification.
Applications	WB IHC
Species Reactivity	Hu
Specificity	The antibody detects endogenous levels of total TWF1 protein.
Immunogen Type	Protein
Immunogen Description	Fusion protein corresponding to a region derived from internal residues of human twinfilin actin-binding protein 1
Target Name	TWF1
Other Names	A6; PTK9
Accession No.	Swiss-Prot:Q12792Gene Accssion:BC022344
Uniprot	Q12792
GeneID	5756;
SDS-PAGE MW	40KD
Concentration	1.0mg/ml
Formulation	Rabbit IgG in pH7.4 PBS, 0.05% NaN <sub>3</sub> , 40% Glycerol.
Storage	Store at -20°C

## Application Details

Western blotting: 1:200-1:1000

Immunohistochemistry: 1:100-1:200

## Images

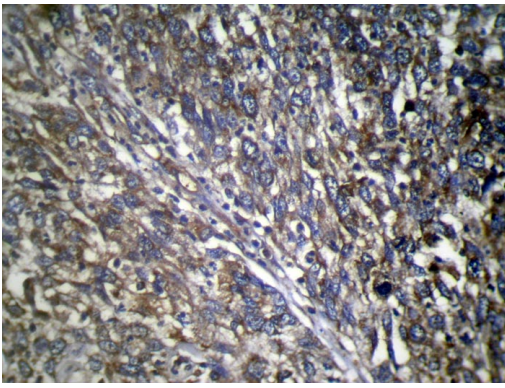


Gel: 8%SDS-PAGE

Lysate: 40ug Lovo cellPrimary antibody: 1/400 dilution

Secondary antibody dilution: 1/8000

Exposure time: 2 minutes



Immunohistochemical analysis of paraffin-embedded Human Esophagus cancer tissue using #40064 at dilution 1/100.

## Background

This gene encodes twinfilin, an actin monomer-binding protein conserved from yeast to mammals. Studies of the mouse counterpart suggest that this protein may be an actin monomer-binding protein, and its localization to cortical G-actin-rich structures may be regulated by the small GTPase RAC1.

Note: This product is for in vitro research use only