

## RAB9A Antibody

Catalog No: #40067

Orders: [order@signalwayantibody.com](mailto:order@signalwayantibody.com)Support: [tech@signalwayantibody.com](mailto:tech@signalwayantibody.com)

## Description

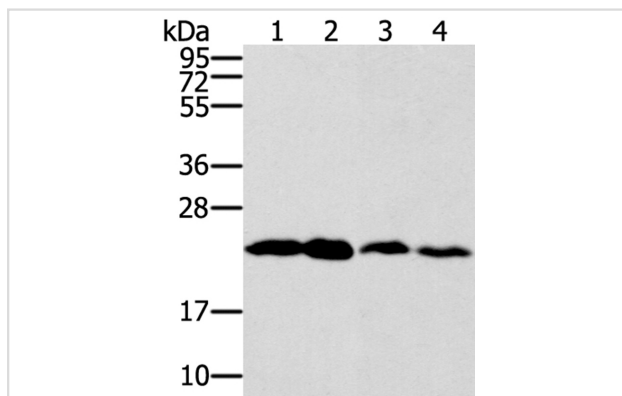
Product Name	RAB9A Antibody
Host Species	Rabbit
Clonality	Polyclonal
Purification	Antigen affinity purification.
Applications	WB IHC
Species Reactivity	Hu Ms
Specificity	The antibody detects endogenous levels of total RAB9A protein.
Immunogen Type	Protein
Immunogen Description	Full length fusion protein
Target Name	RAB9A
Other Names	RAB9
Accession No.	Swiss-Prot:P51151 Gene Accssion:BC017265
Uniprot	P51151
GeneID	9367;
SDS-PAGE MW	23KD
Concentration	1.1mg/ml
Formulation	Rabbit IgG in pH7.4 PBS, 0.05% NaN <sub>3</sub> , 40% Glycerol.
Storage	Store at -20°C

## Application Details

Western blotting: 1:1000-1:5000

Immunohistochemistry:1:25-1:100

## Images



Gel: 12%SDS-PAGE

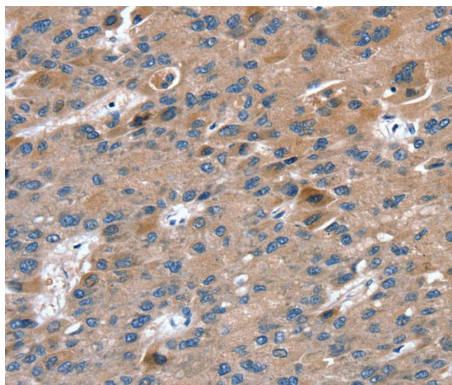
Lysates (from left to right): HeLa, hepg2, RAW264.7 and NIH/3T3 cell

Amount of lysate: 40ug per lane

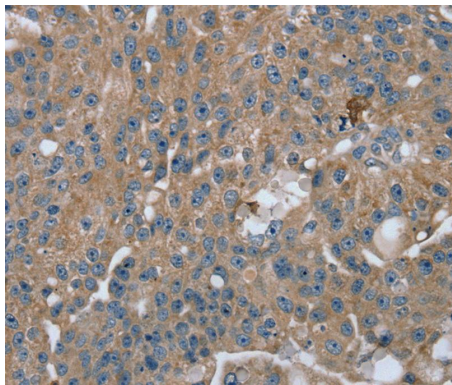
Primary antibody: 1/250 dilution

Secondary antibody dilution: 1/8000

Exposure time: 30 seconds



Immunohistochemical analysis of paraffin-embedded Human liver cancer tissue using #40067 at dilution 1/20.



Immunohistochemical analysis of paraffin-embedded Human breast cancer tissue using #40067 at dilution 1/20.

## Background

Ras-related protein Rab-9A is a protein that in humans is encoded by the RAB9A gene. Rab 9A is a 201 amino acid protein that localizes to the cytoplasmic side of the cell membrane, as well as to the membrane of the Golgi apparatus and the ER, and is involved in the transport of proteins between endosomes and the trans Golgi network.

Note: This product is for in vitro research use only