

## RAB20 Antibody

Catalog No: #40068

Orders: order@signalwayantibody.com

Support: tech@signalwayantibody.com

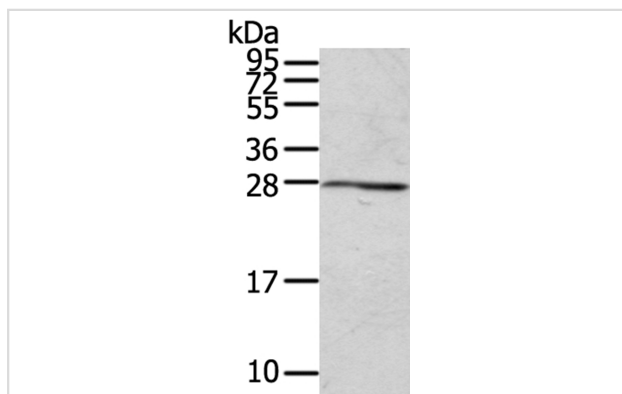
## Description

Product Name	RAB20 Antibody
Host Species	Rabbit
Clonality	Polyclonal
Purification	Antigen affinity purification.
Applications	WB
Species Reactivity	Hu
Specificity	The antibody detects endogenous levels of total RAB20 protein.
Immunogen Type	Protein
Immunogen Description	Full length fusion protein
Target Name	RAB20
Accession No.	Swiss-Prot:Q9NX57Gene Accssion:BC026025
Uniprot	Q9NX57
GeneID	55647;
SDS-PAGE MW	26KD
Concentration	2.7mg/ml
Formulation	Rabbit IgG in pH7.4 PBS, 0.05% NaN <sub>3</sub> , 40% Glycerol.
Storage	Store at -20°C

## Application Details

Western blotting: 1:200-1:1000

## Images



Gel: 12%SDS-PAGE

Lysate: 40ug 231 cellPrimary antibody: 1/200 dilution

Secondary antibody dilution: 1/8000

Exposure time: 40 seconds

## Background

Rab 20 (Ras-related protein Rab-20) is a 234 amino acid protein that localizes to the golgi apparatus and belongs to the Rab subfamily of small GTPases. Expressed in normal and cancerous pancreatic tissue, Rab 20 plays an important role in apical endocytosis and recycling and may be involved in the development of exocrine pancreatic adenocarcinomas.

---

Note: This product is for in vitro research use only