

## RASA4 Antibody

Catalog No: #40069

Orders: [order@signalwayantibody.com](mailto:order@signalwayantibody.com)Support: [tech@signalwayantibody.com](mailto:tech@signalwayantibody.com)

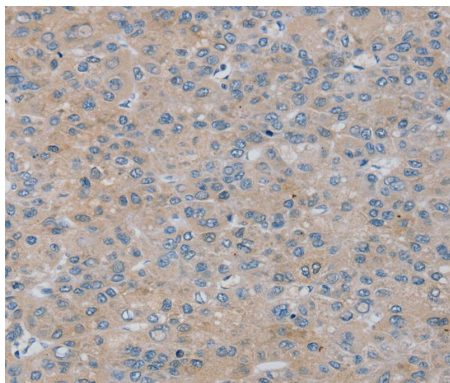
## Description

Product Name	RASA4 Antibody
Host Species	Rabbit
Clonality	Polyclonal
Purification	Antigen affinity purification.
Applications	IHC
Species Reactivity	Hu
Specificity	The antibody detects endogenous levels of total RASA4 protein.
Immunogen Type	Protein
Immunogen Description	Fusion protein corresponding to residues near the C terminal of human RAS p21 protein activator 4
Target Name	RASA4
Other Names	GAPL; CAPRI
Accession No.	Swiss-Prot:O43374Gene Accssion:BC113663
Uniprot	O43374
GeneID	10156;
Concentration	1.2mg/ml
Formulation	Rabbit IgG in pH7.4 PBS, 0.05% NaN <sub>3</sub> , 40% Glycerol.
Storage	Store at -20°C

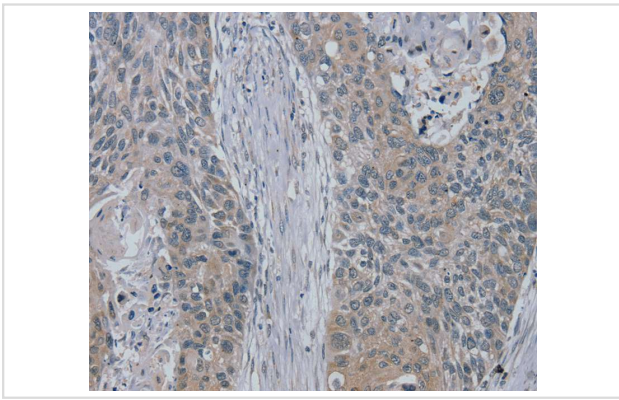
## Application Details

Immunohistochemistry:1:10-1:50

## Images



Immunohistochemical analysis of paraffin-embedded Human liver cancer tissue using #40069 at dilution 1/20.



Immunohistochemical analysis of paraffin-embedded Human esophagus cancer tissue using #40069 at dilution 1/20.

## Background

This gene encodes a member of the GAP1 family of GTPase-activating proteins that suppresses the Ras/mitogen-activated protein kinase pathway in response to  $\text{Ca}^{2+}$ . Stimuli that increase intracellular  $\text{Ca}^{2+}$  levels result in the translocation of this protein to the plasma membrane, where it activates Ras GTPase activity. Consequently, Ras is converted from the active GTP-bound state to the inactive GDP-bound state and no longer activates downstream pathways that regulate gene expression, cell growth, and differentiation. Multiple transcript variants encoding different isoforms have been found for this gene. [

Note: This product is for in vitro research use only