

RASGEF1A Antibody

Catalog No: #40070

Orders: order@signalwayantibody.comSupport: tech@signalwayantibody.com

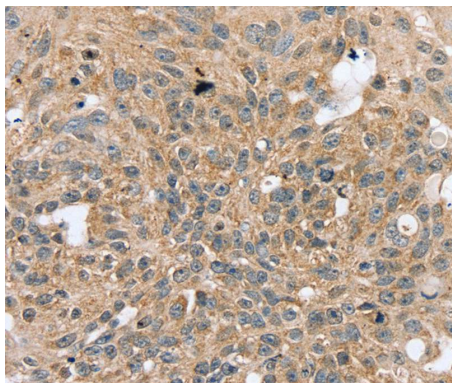
Description

Product Name	RASGEF1A Antibody
Host Species	Rabbit
Clonality	Polyclonal
Purification	Antigen affinity purification.
Applications	IHC
Species Reactivity	Hu
Specificity	The antibody detects endogenous levels of total RASGEF1A protein.
Immunogen Type	Protein
Immunogen Description	Fusion protein corresponding to residues near the C terminal of human RasGEF domain family, member 1A
Target Name	RASGEF1A
Other Names	CG4853
Accession No.	Swiss-Prot:Q8N9B8Gene Accssion:BC022548
Uniprot	Q8N9B8
GeneID	221002;
Concentration	0.7mg/ml
Formulation	Rabbit IgG in pH7.4 PBS, 0.05% NaN ₃ , 40% Glycerol.
Storage	Store at -20°C

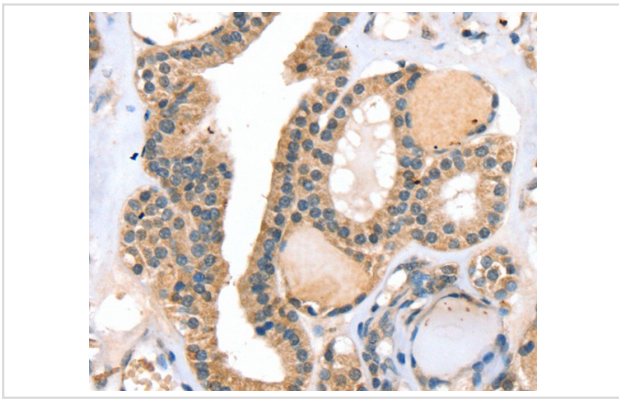
Application Details

Immunohistochemistry:1:20-1:100

Images



Immunohistochemical analysis of paraffin-embedded Human breast cancer tissue using #40070 at dilution 1/20.



Immunohistochemical analysis of paraffin-embedded Human thyroid cancer tissue using #40070 at dilution 1/20.

Background

RASGEF1A (RasGEF domain family, member 1A) is a 481 amino acid guanine-nucleotide exchange factor (GEF) for H-Ras, K-Ras, and N-Ras. RASGEF1A may also play a role in cell migration. RASGEF1A is highly expressed in spinal chord and brain and contains one N-terminal Ras-GEF domain and one Ras-GEF domain. The gene that encodes RASGEF1A maps to human chromosome 10, which contains over 800 genes and 135 million nucleotides, making up nearly 4.5% of the human genome. PTEN is an important tumor suppressor gene located on chromosome 10 and, when defective, causes a genetic predisposition to cancer development known as Cowden syndrome.?

Note: This product is for in vitro research use only