

RASSF7 Antibody

Catalog No: #40072

Orders: order@signalwayantibody.com

Support: tech@signalwayantibody.com

Description

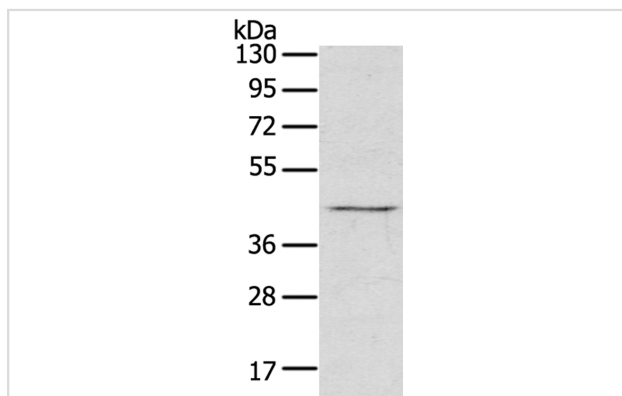
Product Name	RASSF7 Antibody
Host Species	Rabbit
Clonality	Polyclonal
Purification	Antigen affinity purification.
Applications	WB IHC
Species Reactivity	Hu
Specificity	The antibody detects endogenous levels of total RASSF7 protein.
Immunogen Type	Protein
Immunogen Description	Fusion protein corresponding to residues near the C terminal of human Ras association (RaIGDS/AF-6) domain family (N-terminal) member 7
Target Name	RASSF7
Other Names	HRC1; HRAS1; C11orf13
Accession No.	Swiss-Prot:Q02833Gene Accssion:BC106921
Uniprot	Q02833
GeneID	8045;
SDS-PAGE MW	40KD
Concentration	1.6mg/ml
Formulation	Rabbit IgG in pH7.4 PBS, 0.05% NaN ₃ , 40% Glycerol.
Storage	Store at -20°C

Application Details

Western blotting: 1:500-1:2000

Immunohistochemistry: 1:100-1:200

Images

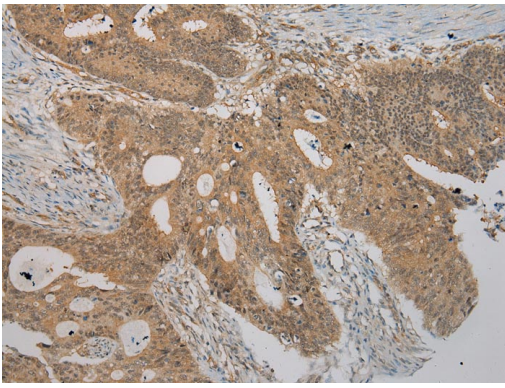


Gel: 8%SDS-PAGE

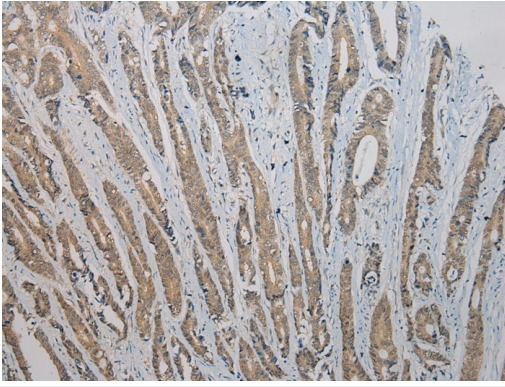
Lysate: 60ug Raji cellPrimary antibody: 1/800 dilution

Secondary antibody dilution: 1/8000

Exposure time: 5 seconds



Immunohistochemical analysis of paraffin-embedded Human Colorectal cancer tissue using #40072 at dilution 1/100.



Immunohistochemical analysis of paraffin-embedded Human Gastric cancer tissue using #40072 at dilution 1/100.

Background

RASSF7 (Ras association domain-containing protein 7), also designated HRAS1-related cluster protein 1, is a 373 amino acid protein that localizes to the centrosome. RASSF7, RASSF8, RASSF9 and RASSF10 are four evolutionary conserved proteins that are collectively known as the N-terminal RASSF family. Expressed in skin, neural tube and eye, RASSF7 is believed to play an essential role in mitosis. Further supporting its mitotic role, knockdown of *Xenopus* RASSF7 has been shown to influence cell failure to form mitotic spindle and also cause nuclear breakdown and apoptosis.?

Note: This product is for in vitro research use only