

## RLN1 Antibody

Catalog No: #40073

Orders: [order@signalwayantibody.com](mailto:order@signalwayantibody.com)Support: [tech@signalwayantibody.com](mailto:tech@signalwayantibody.com)

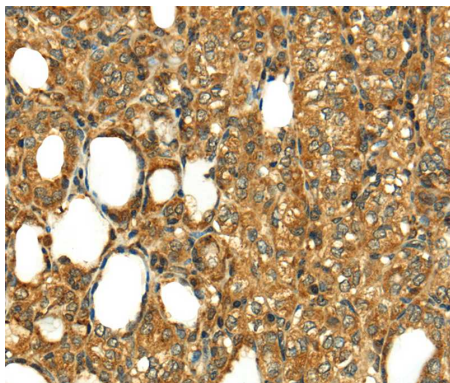
## Description

Product Name	RLN1 Antibody
Host Species	Rabbit
Clonality	Polyclonal
Purification	Antigen affinity purification.
Applications	IHC
Species Reactivity	Hu
Specificity	The antibody detects endogenous levels of total RLN1 protein.
Immunogen Type	Protein
Immunogen Description	Fusion protein corresponding to a region derived from internal residues of human relaxin 1
Target Name	RLN1
Other Names	H1; H1RLX; RLXH1; bA12D24.3.1; bA12D24.3.2
Accession No.	Swiss-Prot:P04808Gene Accssion:BC005956
Uniprot	P04808
GeneID	6013;
Concentration	0.8mg/ml
Formulation	Rabbit IgG in pH7.4 PBS, 0.05% NaN <sub>3</sub> , 40% Glycerol.
Storage	Store at -20°C

## Application Details

Immunohistochemistry:1:25-1:100

## Images



Immunohistochemical analysis of paraffin-embedded Human thyroid cancer tissue using #40073 at dilution 1/20.

## Background

Relaxins are known endocrine and autocrine/paracrine hormones, belonging to the insulin gene superfamily. In humans there are three non-allelic relaxin genes, RLN1, RLN2 and RLN3, where RLN1 and RLN2 share high sequence homology. The protein encoded by this gene is synthesized as a single-chain polypeptide but the active form consists of an A chain and a B chain linked by disulfide bonds. Relaxin is produced by the ovary, and targets the mammalian reproductive system to ripen the cervix, elongate the pubic symphysis and inhibit uterine contraction. It may have additional

roles in enhancing sperm motility, regulating blood pressure, controlling heart rate and releasing oxytocin and vasopressin.

---

Note: This product is for in vitro research use only