

RGS11 Antibody

Catalog No: #40074

Orders: order@signalwayantibody.comSupport: tech@signalwayantibody.com

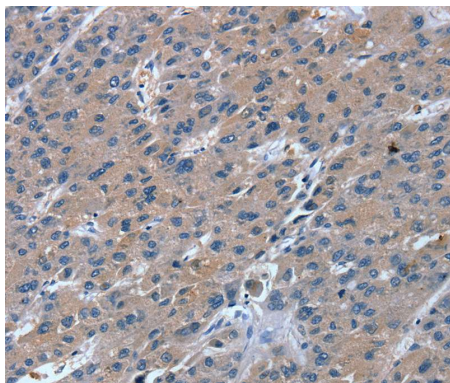
Description

Product Name	RGS11 Antibody
Host Species	Rabbit
Clonality	Polyclonal
Purification	Antigen affinity purification.
Applications	IHC
Species Reactivity	Hu
Specificity	The antibody detects endogenous levels of total RGS11 protein.
Immunogen Type	Protein
Immunogen Description	Fusion protein corresponding to residues near the C terminal of human regulator of G-protein signaling 11
Target Name	RGS11
Other Names	RS11
Accession No.	Swiss-Prot:O94810Gene Accssion:BC141803
Uniprot	O94810
GeneID	8786;
Concentration	0.8mg/ml
Formulation	Rabbit IgG in pH7.4 PBS, 0.05% NaN ₃ , 40% Glycerol.
Storage	Store at -20°C

Application Details

Immunohistochemistry:1:10-1:50

Images



Immunohistochemical analysis of paraffin-embedded Human liver cancer tissue using #40074 at dilution 1/20.

Background

The protein encoded by this gene belongs to the RGS (regulator of G protein signaling) family. Members of the RGS family act as GTPase-activating proteins on the alpha subunits of heterotrimeric, signal-transducing G proteins. This protein inhibits signal transduction by increasing the GTPase activity of G protein alpha subunits, thereby driving them into their inactive GDP-bound form. Alternative splicing occurs at this locus and four transcript variants encoding distinct isoforms have been identified.

Note: This product is for in vitro research use only