

RNH1 Antibody

Catalog No: #40076

Orders: order@signalwayantibody.com

Support: tech@signalwayantibody.com

Description

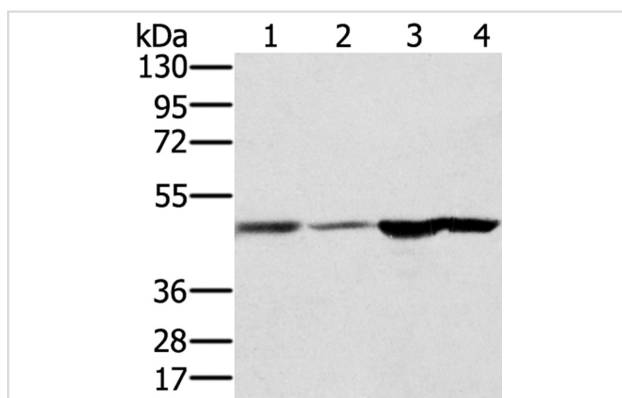
Product Name	RNH1 Antibody
Host Species	Rabbit
Clonality	Polyclonal
Purification	Antigen affinity purification.
Applications	WB IHC
Species Reactivity	Hu
Specificity	The antibody detects endogenous levels of total RNH1 protein.
Immunogen Type	Protein
Immunogen Description	Fusion protein corresponding to residues near the C terminal of human ribonuclease/angiogenin inhibitor 1
Target Name	RNH1
Other Names	RAI; RNH
Accession No.	Swiss-Prot:P13489Gene Accssion:BC003506
Uniprot	P13489
GeneID	6050;
SDS-PAGE MW	50KD
Concentration	2.2mg/ml
Formulation	Rabbit IgG in pH7.4 PBS, 0.05% NaN ₃ , 40% Glycerol.
Storage	Store at -20°C

Application Details

Western blotting: 1:500-1:2000

Immunohistochemistry:1:25-1:100

Images



Gel: 8%SDS-PAGE

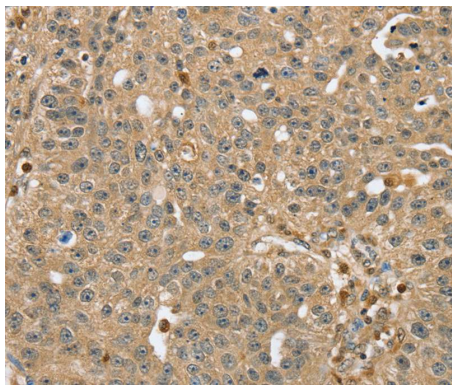
Lysates (from left to right): Human fetal brain and normal liver tissue, human normal kidney tissue and hepg2 cell

Amount of lysate: 40ug per lane

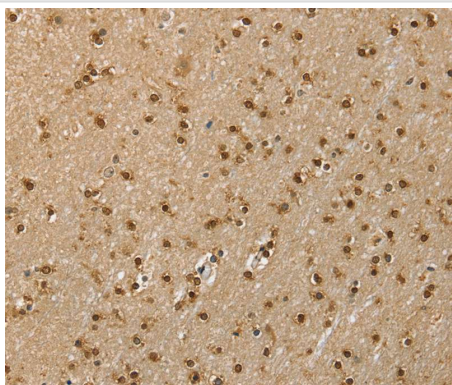
Primary antibody: 1/400 dilution

Secondary antibody dilution: 1/8000

Exposure time: 10 seconds



Immunohistochemical analysis of paraffin-embedded Human breast cancer tissue using #40076 at dilution 1/40.



Immunohistochemical analysis of paraffin-embedded Human brain tissue using #40076 at dilution 1/40.

Background

Placental ribonuclease inhibitor (PRI) is a member of a family of proteinaceous cytoplasmic RNase inhibitors that occur in many tissues and bind to both intracellular and extracellular RNases (summarized by Lee et al., 1988 [PubMed 3219362]). In addition to control of intracellular RNases, the inhibitor may have a role in the regulation of angiogenin (MIM 105850). Ribonuclease inhibitor, of 50,000 Da, binds to ribonucleases and holds them in a latent form.

Note: This product is for in vitro research use only