

SCPEP1 Antibody

Catalog No: #40078

Orders: order@signalwayantibody.comSupport: tech@signalwayantibody.com

Description

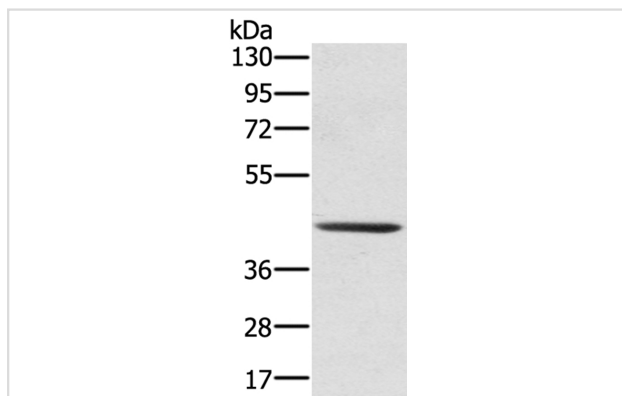
Product Name	SCPEP1 Antibody
Host Species	Rabbit
Clonality	Polyclonal
Purification	Antigen affinity purification.
Applications	WB IHC
Species Reactivity	Hu
Specificity	The antibody detects endogenous levels of total SCPEP1 protein.
Immunogen Type	Protein
Immunogen Description	Fusion protein corresponding to residues near the C terminal of human serine carboxypeptidase 1
Target Name	SCPEP1
Other Names	RISC; HSCP1
Accession No.	Swiss-Prot:Q9HB40Gene Accssion:BC072405
Uniprot	Q9HB40
GeneID	59342;
SDS-PAGE MW	51KD
Concentration	1.1mg/ml
Formulation	Rabbit IgG in pH7.4 PBS, 0.05% NaN ₃ , 40% Glycerol.
Storage	Store at -20°C

Application Details

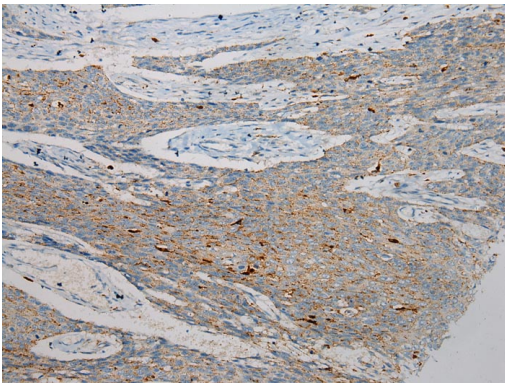
Western blotting: 1:200-1:1000

Immunohistochemistry: 1:100-1:200

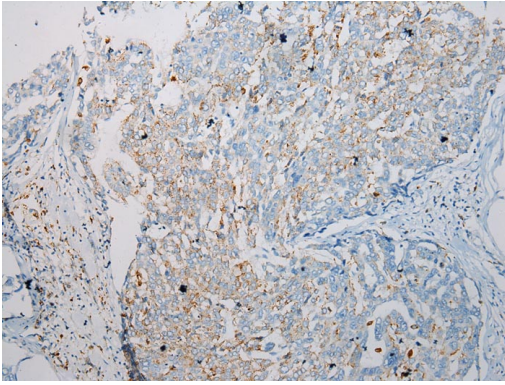
Images



Gel: 8%SDS-PAGE
Lysate: 40ug 231 cellPrimary antibody: 1/300 dilution
Secondary antibody dilution: 1/8000
Exposure time: 5 seconds



Immunohistochemical analysis of paraffin-embedded Human Esophagus cancer tissue using #40078 at dilution 1/100.



Immunohistochemical analysis of paraffin-embedded Human Liver cancer tissue using #40078 at dilution 1/200.

Background

Retinoid-inducible serine carboxypeptidase is an enzyme that in humans is encoded by the SCPEP1 gene. May be involved in vascular wall and kidney homeostasis.

Note: This product is for in vitro research use only