

RNF20 Antibody

Catalog No: #40080

Orders: order@signalwayantibody.com

Support: tech@signalwayantibody.com

Description

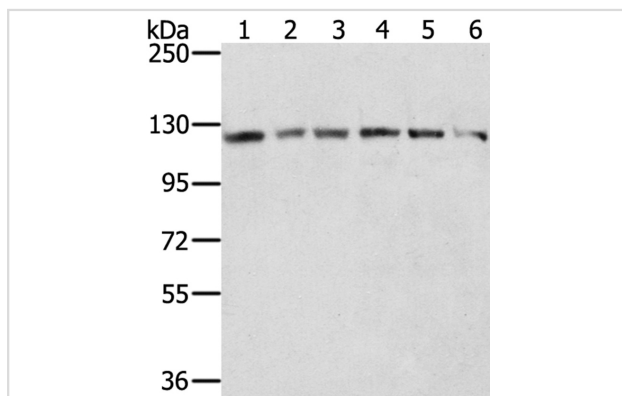
Product Name	RNF20 Antibody
Host Species	Rabbit
Clonality	Polyclonal
Purification	Antigen affinity purification.
Applications	WB IHC
Species Reactivity	Hu
Specificity	The antibody detects endogenous levels of total RNF20 protein.
Immunogen Type	Protein
Immunogen Description	Fusion protein corresponding to residues near the C terminal of human ring finger protein 20, E3 ubiquitin protein ligase
Target Name	RNF20
Other Names	BRE1; BRE1A; hBRE1
Accession No.	Swiss-Prot:Q5VTR2Gene Accssion:BC110585
Uniprot	Q5VTR2
GeneID	56254;
SDS-PAGE MW	114KD
Concentration	1.2mg/ml
Formulation	Rabbit IgG in pH7.4 PBS, 0.05% NaN ₃ , 40% Glycerol.
Storage	Store at -20°C

Application Details

Western blotting: 1:500-1:2000

Immunohistochemistry:1:10-1:50

Images



Gel: 6%SDS-PAGE

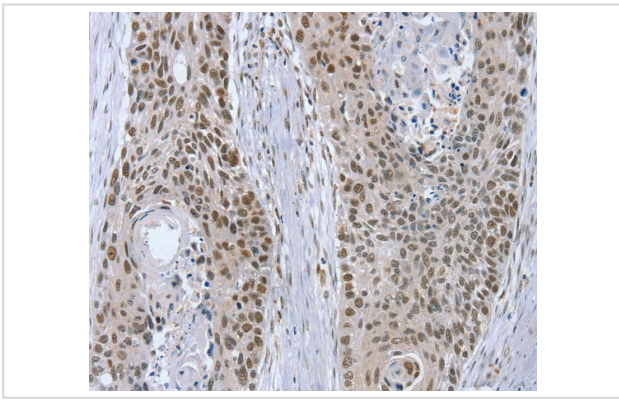
Lysates (from left to right): HeLa, Jurkat, 231, A375, A172 and Lovo cell

Amount of lysate: 40ug per lane

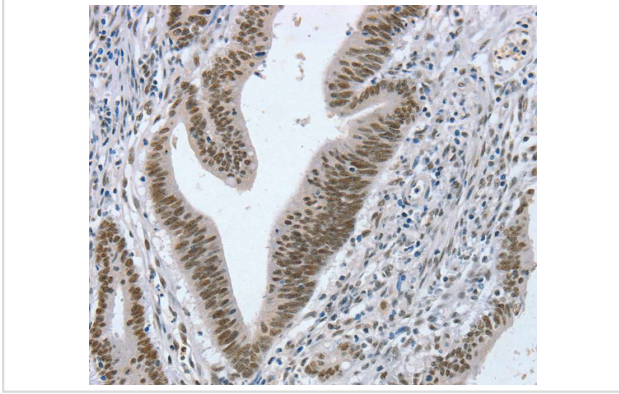
Primary antibody: 1/300 dilution

Secondary antibody dilution: 1/8000

Exposure time: 5 seconds



Immunohistochemical analysis of paraffin-embedded Human esophagus cancer tissue using #40080 at dilution 1/20.



Immunohistochemical analysis of paraffin-embedded Human colon cancer tissue using #40080 at dilution 1/20.

Background

The protein encoded by this gene shares similarity with BRE1 of *S. cerevisiae*. The protein encoded by this human gene is an E3 ubiquitin ligase that regulates chromosome structure by monoubiquitinating histone H2B. This protein acts as a putative tumor suppressor and positively regulates the p53 tumor suppressor as well as numerous histone H2A and H2B genes. In contrast, this protein also suppresses the expression of several protooncogenes and growth-related genes, including many genes that are induced by epidermal growth factor.

Note: This product is for in vitro research use only