

## RNF11 Antibody

Catalog No: #40081

Orders: [order@signalwayantibody.com](mailto:order@signalwayantibody.com)Support: [tech@signalwayantibody.com](mailto:tech@signalwayantibody.com)

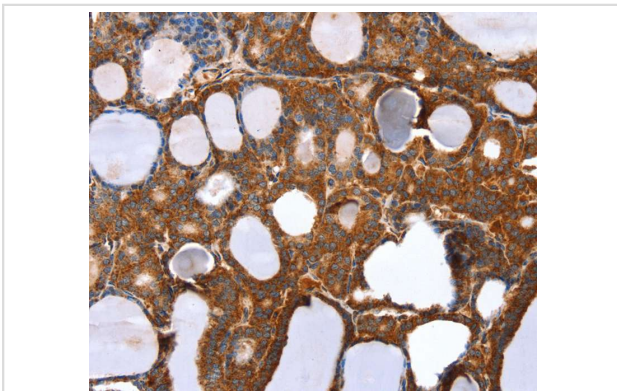
## Description

Product Name	RNF11 Antibody
Host Species	Rabbit
Clonality	Polyclonal
Purification	Antigen affinity purification.
Applications	IHC
Species Reactivity	Hu
Specificity	The antibody detects endogenous levels of total RNF11 protein.
Immunogen Type	Protein
Immunogen Description	Full length fusion protein
Target Name	RNF11
Other Names	CGI-123; SID1669
Accession No.	Swiss-Prot:Q9Y3C5Gene Accssion:BC020964
Uniprot	Q9Y3C5
GeneID	26994;
Concentration	1.2mg/ml
Formulation	Rabbit IgG in pH7.4 PBS, 0.05% NaN <sub>3</sub> , 40% Glycerol.
Storage	Store at -20°C

## Application Details

Immunohistochemistry:1:25-1:100

## Images



Immunohistochemical analysis of paraffin-embedded Human thyroid cancer tissue using #40081 at dilution 1/20.

## Background

The protein encoded by this gene contains a RING-H2 finger motif, which is known to be important for protein-protein interactions. The expression of this gene has been shown to be induced by mutant RET proteins (MEN2A/MEN2B). The germline mutations in RET gene are known to be responsible for the development of multiple endocrine neoplasia (MEN).

---

Note: This product is for in vitro research use only