

RPS6KA1 Antibody

Catalog No: #40085

Orders: order@signalwayantibody.comSupport: tech@signalwayantibody.com

Description

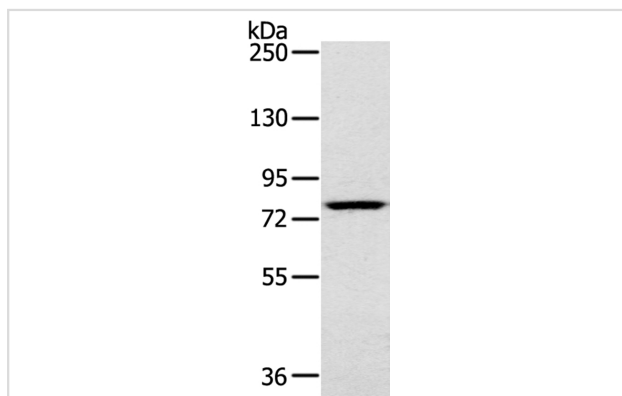
Product Name	RPS6KA1 Antibody
Host Species	Rabbit
Clonality	Polyclonal
Purification	Antigen affinity purification.
Applications	WB IHC
Species Reactivity	Hu
Specificity	The antibody detects endogenous levels of total RPS6KA1 protein.
Immunogen Type	Protein
Immunogen Description	Fusion protein corresponding to residues near the C terminal of human ribosomal protein S6 kinase, 90kDa, polypeptide 1
Target Name	RPS6KA1
Other Names	RSK; HU-1; RSK1; MAPKAPK1A
Accession No.	Swiss-Prot:Q15418Gene Accssion:BC014966
Uniprot	Q15418
GeneID	6195;
SDS-PAGE MW	83KD
Concentration	1.6mg/ml
Formulation	Rabbit IgG in pH7.4 PBS, 0.05% NaN ₃ , 40% Glycerol.
Storage	Store at -20°C

Application Details

Western blotting: 1:500-1:2000

Immunohistochemistry:1:25-1:100

Images

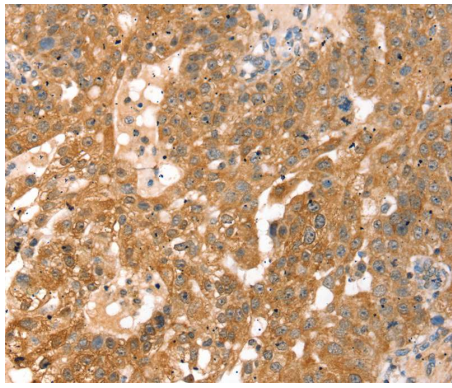


Gel: 6%SDS-PAGE

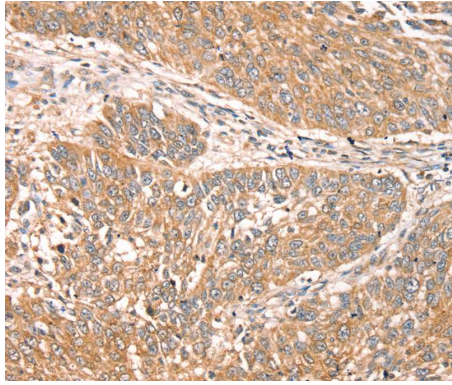
Lysate: 40ug K562 cellPrimary antibody: 1/400 dilution

Secondary antibody dilution: 1/8000

Exposure time: 5 seconds



Immunohistochemical analysis of paraffin-embedded Human breast cancer tissue using #40085 at dilution 1/30.



Immunohistochemical analysis of paraffin-embedded Human lung cancer tissue using #40085 at dilution 1/30.

Background

This gene encodes a member of the RSK (ribosomal S6 kinase) family of serine/threonine kinases. This kinase contains 2 nonidentical kinase catalytic domains and phosphorylates various substrates, including members of the mitogen-activated kinase (MAPK) signalling pathway. The activity of this protein has been implicated in controlling cell growth and differentiation. Alternate transcriptional splice variants, encoding different isoforms, have been characterized.?

Note: This product is for in vitro research use only