

RRBP1 Antibody

Catalog No: #40086

Orders: order@signalwayantibody.comSupport: tech@signalwayantibody.com

Description

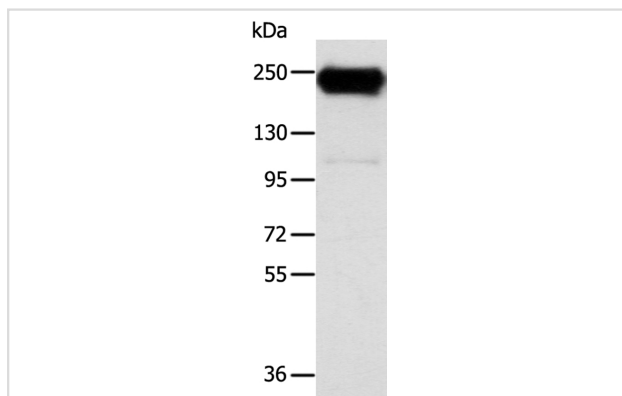
Product Name	RRBP1 Antibody
Host Species	Rabbit
Clonality	Polyclonal
Purification	Antigen affinity purification.
Applications	WB IHC
Species Reactivity	Hu
Specificity	The antibody detects endogenous levels of total RRBP1 protein.
Immunogen Type	Protein
Immunogen Description	Fusion protein corresponding to residues near the C terminal of human ribosome binding protein 1
Target Name	RRBP1
Other Names	RRp; hES; ES130; ES/130
Accession No.	Swiss-Prot:Q9P2E9Gene Accssion:BC128577
Uniprot	Q9P2E9
GeneID	6238;
SDS-PAGE MW	152KD
Concentration	1.5mg/ml
Formulation	Rabbit IgG in pH7.4 PBS, 0.05% NaN ₃ , 40% Glycerol.
Storage	Store at -20°C

Application Details

Western blotting: 1:500-1:2000

Immunohistochemistry:1:25-1:100

Images

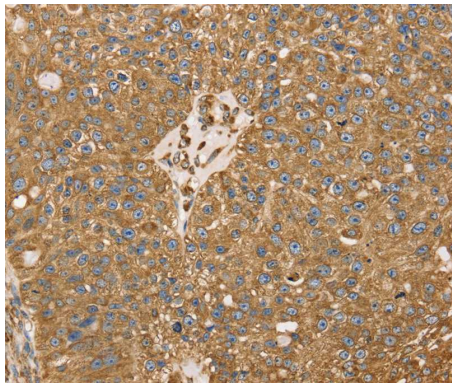


Gel: 6%SDS-PAGE

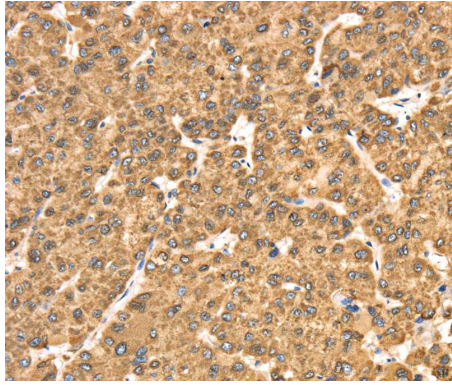
Lysate: 40ug K562 cellPrimary antibody: 1/400 dilution

Secondary antibody dilution: 1/8000

Exposure time: 10 seconds



Immunohistochemical analysis of paraffin-embedded Human breast cancer tissue using #40086 at dilution 1/25.



Immunohistochemical analysis of paraffin-embedded Human liver cancer tissue using #40086 at dilution 1/25.

Background

This gene encodes a ribosome-binding protein of the endoplasmic reticulum (ER) membrane. Studies suggest that this gene plays a role in ER proliferation, secretory pathways and secretory cell differentiation, and mediation of ER-microtubule interactions. Alternative splicing has been observed and protein isoforms are characterized by regions of N-terminal decapeptide and C-terminal heptad repeats. Splicing of the tandem repeats results in variations in ribosome-binding affinity and secretory function.?

Note: This product is for in vitro research use only