

## ATOX1 Antibody

Catalog No: #40087

Orders: [order@signalwayantibody.com](mailto:order@signalwayantibody.com)Support: [tech@signalwayantibody.com](mailto:tech@signalwayantibody.com)

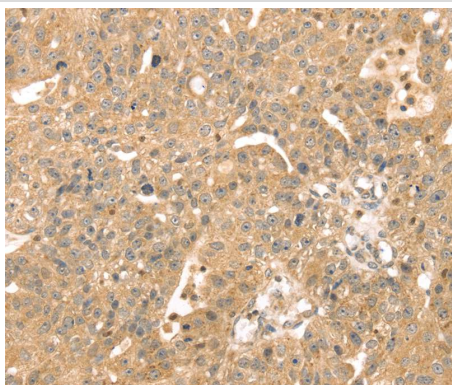
## Description

Product Name	ATOX1 Antibody
Host Species	Rabbit
Clonality	Polyclonal
Purification	Antigen affinity purification.
Applications	IHC
Species Reactivity	Hu
Specificity	The antibody detects endogenous levels of total ATOX1 protein.
Immunogen Type	Protein
Immunogen Description	Full length fusion protein
Target Name	ATOX1
Other Names	ATX1; HAH1
Accession No.	Swiss-Prot:O00244Gene Accssion:BC112248
Uniprot	O00244
GeneID	475;
Concentration	1.8mg/ml
Formulation	Rabbit IgG in pH7.4 PBS, 0.05% NaN <sub>3</sub> , 40% Glycerol.
Storage	Store at -20°C

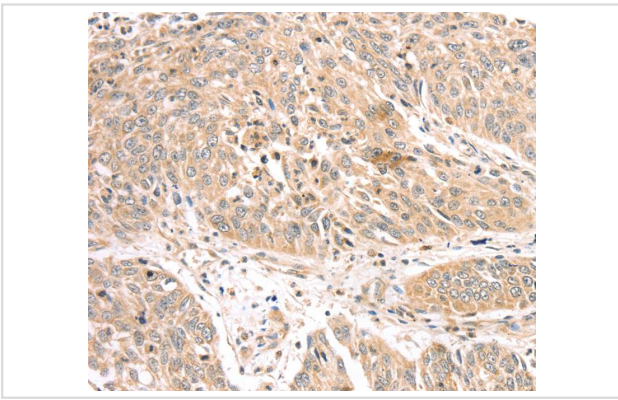
## Application Details

Immunohistochemistry:1:25-1:100

## Images



Immunohistochemical analysis of paraffin-embedded Human breast cancer tissue using #40087 at dilution 1/30.



Immunohistochemical analysis of paraffin-embedded Human lung cancer tissue using #40087 at dilution 1/30.

## Background

This gene encodes a copper chaperone that plays a role in copper homeostasis by binding and transporting cytosolic copper to ATPase proteins in the trans-Golgi network for later incorporation to the ceruloplasmin. This protein also functions as an antioxidant against superoxide and hydrogen peroxide, and therefore, may play a significant role in cancer carcinogenesis. Because of its cytogenetic location, this gene represents a candidate gene for 5q-syndrome.

Note: This product is for in vitro research use only