

## S100A14 Antibody

Catalog No: #40088

Orders: [order@signalwayantibody.com](mailto:order@signalwayantibody.com)Support: [tech@signalwayantibody.com](mailto:tech@signalwayantibody.com)

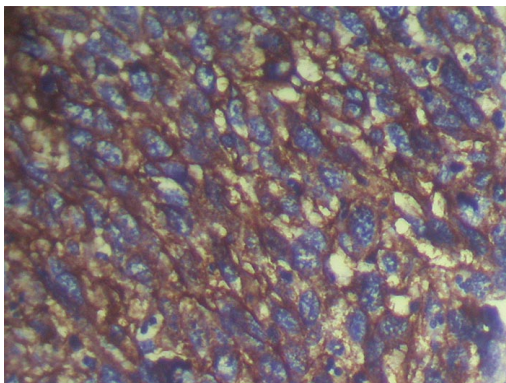
## Description

Product Name	S100A14 Antibody
Host Species	Rabbit
Clonality	Polyclonal
Purification	Antigen affinity purification.
Applications	IHC
Species Reactivity	Hu
Specificity	The antibody detects endogenous levels of total S100A14 protein.
Immunogen Type	Protein
Immunogen Description	Full length fusion protein
Target Name	S100A14
Other Names	BCMP84; S100A15
Accession No.	Swiss-Prot:Q9HCY8Gene Accssion:BC005019
Uniprot	Q9HCY8
GeneID	57402;
Concentration	1.6mg/ml
Formulation	Rabbit IgG in pH7.4 PBS, 0.05% NaN <sub>3</sub> , 40% Glycerol.
Storage	Store at -20°C

## Application Details

Immunohistochemistry: 1:100-1:200

## Images



Immunohistochemical analysis of paraffin-embedded Human Esophagus cancer tissue using #40088 at dilution 1/100.

## Background

This gene encodes a member of the S100 protein family which contains an EF-hand motif and binds calcium. The gene is located in a cluster of S100 genes on chromosome 1. Levels of the encoded protein have been found to be lower in cancerous tissue and associated with metastasis suggesting a tumor suppressor function

---

Note: This product is for in vitro research use only