

S100P Antibody

Catalog No: #40089

Orders: order@signalwayantibody.comSupport: tech@signalwayantibody.com

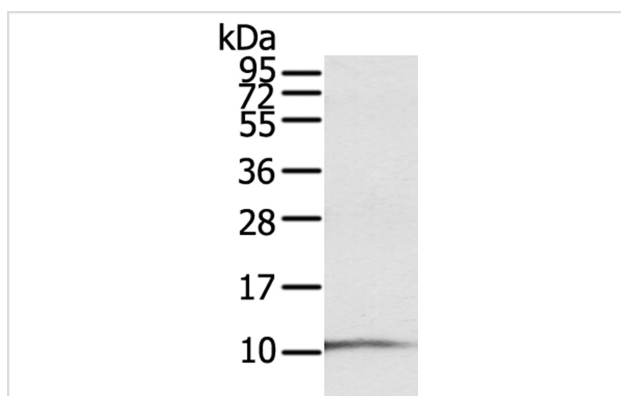
Description

Product Name	S100P Antibody
Host Species	Rabbit
Clonality	Polyclonal
Purification	Antigen affinity purification.
Applications	WB
Species Reactivity	Hu
Specificity	The antibody detects endogenous levels of total S100P protein.
Immunogen Type	Protein
Immunogen Description	Full length fusion protein
Target Name	S100P
Other Names	MIG9
Accession No.	Swiss-Prot:P25815Gene Accssion:BC006819
Uniprot	P25815
GeneID	6286;
SDS-PAGE MW	10KD
Concentration	2.6mg/ml
Formulation	Rabbit IgG in pH7.4 PBS, 0.05% NaN ₃ , 40% Glycerol.
Storage	Store at -20°C

Application Details

Western blotting: 1:200-1:1000

Images



Gel: 12%SDS-PAGE
 Lysate: 40ug A431 cell
 Primary antibody: 1/600 dilution
 Secondary antibody dilution: 1/8000
 Exposure time: 30 seconds

Background

The protein encoded by this gene is a member of the S100 family of proteins containing 2 EF-hand calcium-binding motifs. S100 proteins are localized in the cytoplasm and/or nucleus of a wide range of cells, and involved in the regulation of a number of cellular processes such as cell cycle

progression and differentiation. S100 genes include at least 13 members which are located as a cluster on chromosome 1q21; however, this gene is located at 4p16. This protein, in addition to binding Ca^{2+} , also binds Zn^{2+} and Mg^{2+} .

Note: This product is for in vitro research use only