

STAG2 Antibody

Catalog No: #40090

Orders: order@signalwayantibody.comSupport: tech@signalwayantibody.com

Description

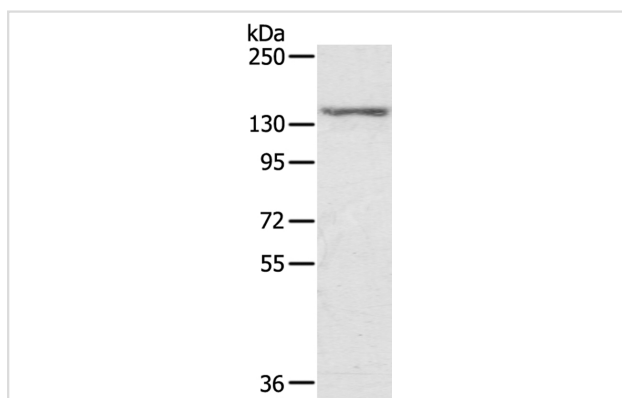
Product Name	STAG2 Antibody
Host Species	Rabbit
Clonality	Polyclonal
Purification	Antigen affinity purification.
Applications	WB IHC
Species Reactivity	Hu
Specificity	The antibody detects endogenous levels of total STAG2 protein.
Immunogen Type	Protein
Immunogen Description	Fusion protein corresponding to residues near the C terminal of human stromal antigen 2
Target Name	STAG2
Other Names	SA2; SA-2; SCC3B; bA517O1.1
Accession No.	Swiss-Prot:Q8N3U4Gene Accssion:BC001765
Uniprot	Q8N3U4
GeneID	10735;
SDS-PAGE MW	141KD
Concentration	1.9mg/ml
Formulation	Rabbit IgG in pH7.4 PBS, 0.05% NaN ₃ , 40% Glycerol.
Storage	Store at -20°C

Application Details

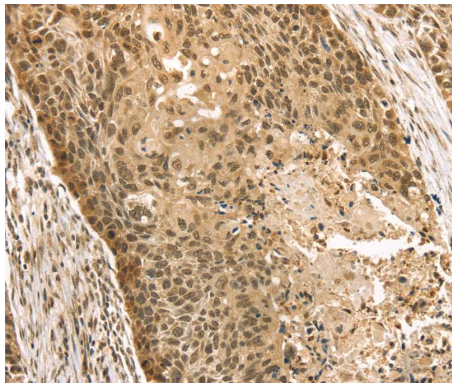
Western blotting: 1:200-1:1000

Immunohistochemistry:1:25-1:100

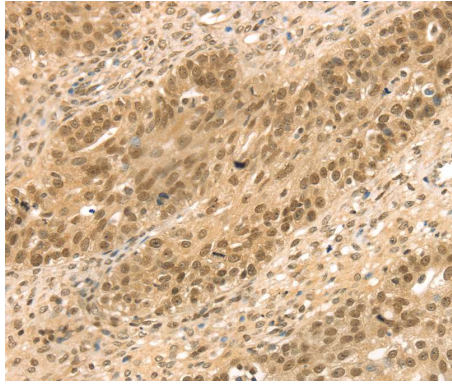
Images



Gel: 6%SDS-PAGE
Lysate: 40ug MCF7 cellPrimary antibody: 1/300 dilution
Secondary antibody dilution: 1/8000
Exposure time: 5 seconds



Immunohistochemical analysis of paraffin-embedded Human esophagus cancer tissue using #40090 at dilution 1/35.



Immunohistochemical analysis of paraffin-embedded Human breast cancer tissue using #40090 at dilution 1/35.

Background

The protein encoded by this gene is a subunit of the cohesin complex, which regulates the separation of sister chromatids during cell division. Targeted inactivation of this gene results in chromatid cohesion defects and aneuploidy, suggesting that genetic disruption of cohesin is a cause of aneuploidy in human cancer. Alternatively spliced transcript variants encoding different isoforms have been found for this gene.

Note: This product is for in vitro research use only