

SAMD7 Antibody

Catalog No: #40091

Orders: order@signalwayantibody.comSupport: tech@signalwayantibody.com

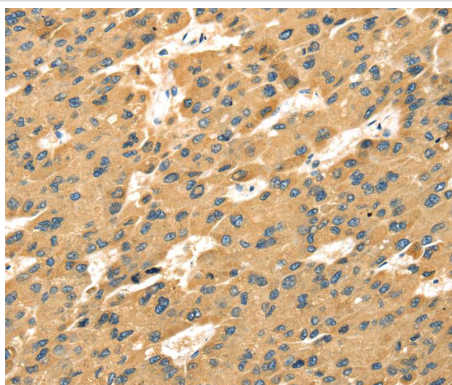
Description

Product Name	SAMD7 Antibody
Host Species	Rabbit
Clonality	Polyclonal
Purification	Antigen affinity purification.
Applications	IHC
Species Reactivity	Hu
Specificity	The antibody detects endogenous levels of total SAMD7 protein.
Immunogen Type	Protein
Immunogen Description	Fusion protein corresponding to residues near the N terminal of human sterile alpha motif domain containing 7
Target Name	SAMD7
Accession No.	Swiss-Prot:Q7Z3H4Gene Accssion:BC117339
Uniprot	Q7Z3H4
GeneID	344658;
Concentration	2mg/ml
Formulation	Rabbit IgG in pH7.4 PBS, 0.05% NaN ₃ , 40% Glycerol.
Storage	Store at -20°C

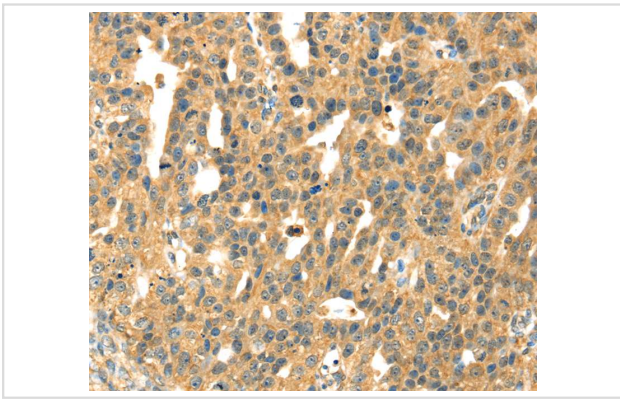
Application Details

Immunohistochemistry:1:25-1:100

Images



Immunohistochemical analysis of paraffin-embedded Human liver cancer tissue using #40091 at dilution 1/35.



Immunohistochemical analysis of paraffin-embedded Human breast cancer tissue using #40091 at dilution 1/35.

Background

SAMD7 (Sterile alpha motif domain-containing protein 7), is a 446 amino acid protein encoded by the SAMD7 gene which maps to human chromosome 3. Chromosome 3 is made up of about 214 million bases encoding over 1,100 genes, including a chemokine receptor (CKR) gene cluster and a variety of human cancer-related gene loci. Key tumor suppressing genes on chromosome 3 include those that encode the apoptosis mediator RASSF1, the cell migration regulator HYAL1 and the angiogenesis suppressor SEMA3B.

Note: This product is for in vitro research use only