

SEPP1 Antibody

Catalog No: #40096

Orders: order@signalwayantibody.comSupport: tech@signalwayantibody.com

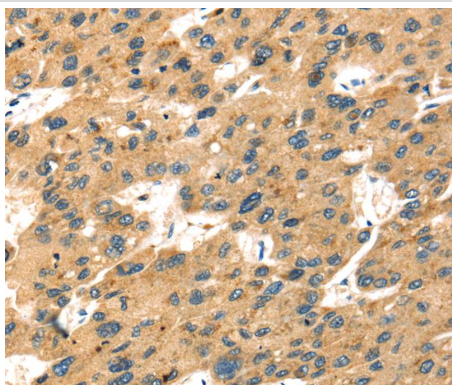
Description

Product Name	SEPP1 Antibody
Host Species	Rabbit
Clonality	Polyclonal
Purification	Antigen affinity purification.
Applications	IHC
Species Reactivity	Hu
Specificity	The antibody detects endogenous levels of total SEPP1 protein.
Immunogen Type	Protein
Immunogen Description	Fusion protein corresponding to a region derived from internal residues of human selenoprotein P, plasma, 1
Target Name	SEPP1
Other Names	SeP; SELP
Accession No.	Swiss-Prot:P49908Gene Accssion:BC058919
Uniprot	P49908
GeneID	6414;
Concentration	1.1mg/ml
Formulation	Rabbit IgG in pH7.4 PBS, 0.05% NaN ₃ , 40% Glycerol.
Storage	Store at -20°C

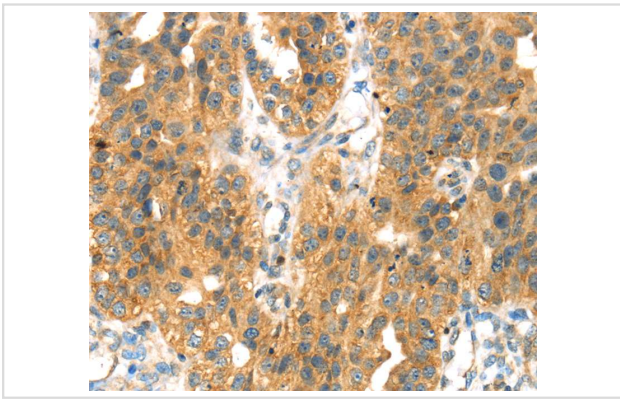
Application Details

Immunohistochemistry:1:25-1:100

Images



Immunohistochemical analysis of paraffin-embedded Human liver cancer tissue using #40096 at dilution 1/20.



Immunohistochemical analysis of paraffin-embedded Human breast cancer tissue using #40096 at dilution 1/20.

Background

This gene encodes a selenoprotein containing multiple selenocysteine (Sec) residues, which are encoded by the UGA codon that normally signals translation termination. The 3' UTR of selenoprotein genes have a common stem-loop structure, the sec insertion sequence (SECIS), which is necessary for the recognition of UGA as a Sec codon rather than as a stop signal. This selenoprotein is an extracellular glycoprotein, and is unusual in that it contains 10 Sec residues per polypeptide. It is a heparin-binding protein that appears to be associated with endothelial cells, and has been implicated to function as an antioxidant in the extracellular space. Several transcript variants, encoding either the same or different isoform, have been found for this gene.

Note: This product is for in vitro research use only