

SEMA4F Antibody

Catalog No: #40098

Orders: order@signalwayantibody.comSupport: tech@signalwayantibody.com

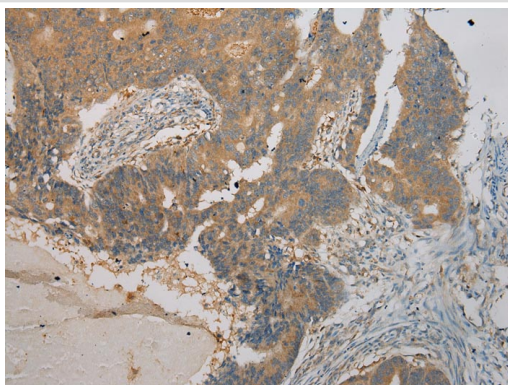
Description

Product Name	SEMA4F Antibody
Host Species	Rabbit
Clonality	Polyclonal
Purification	Antigen affinity purification.
Applications	IHC
Species Reactivity	Hu
Specificity	The antibody detects endogenous levels of total SEMA4F protein.
Immunogen Type	Protein
Immunogen Description	Fusion protein of human sema domain, immunoglobulin domain (Ig), transmembrane domain (TM) and short cytoplasmic domain, (semaphorin) 4F
Target Name	SEMA4F
Other Names	S4F; SEMAM; SEMAW; M-SEMA; PRO2353; m-Sema-M
Accession No.	Swiss-Prot:O95754Gene Accssion:BC038411
Uniprot	O95754
GeneID	10505;
Concentration	2.1mg/ml
Formulation	Rabbit IgG in pH7.4 PBS, 0.05% NaN ₃ , 40% Glycerol.
Storage	Store at -20°C

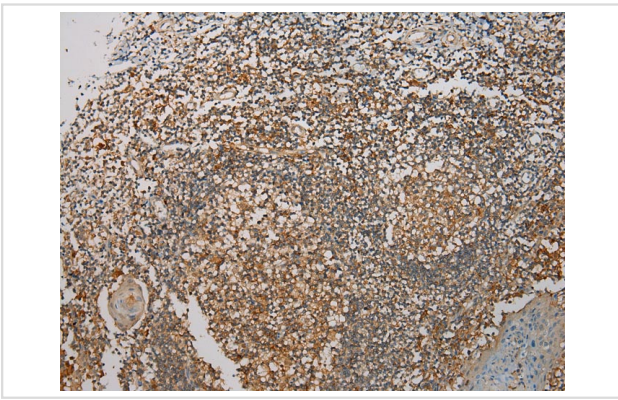
Application Details

Immunohistochemistry: 1:100-1:200

Images



Immunohistochemical analysis of paraffin-embedded Human Colorectal cancer tissue using #40098 at dilution 1/100.



Immunohistochemical analysis of paraffin-embedded Human Tonsil cancer tissue using #40098 at dilution 1/100.

Background

This gene encodes a transmembrane class IV semaphorin family protein, which plays a role in neural development. This gene may be involved in neurogenesis in prostate cancer, the development of neurofibromas, and breast cancer tumorigenesis. Alternative splicing results in multiple transcript variants.?

Note: This product is for in vitro research use only