

CD1D antibody

Catalog No: #22502

Orders: order@signalwayantibody.com

Support: tech@signalwayantibody.com

Description

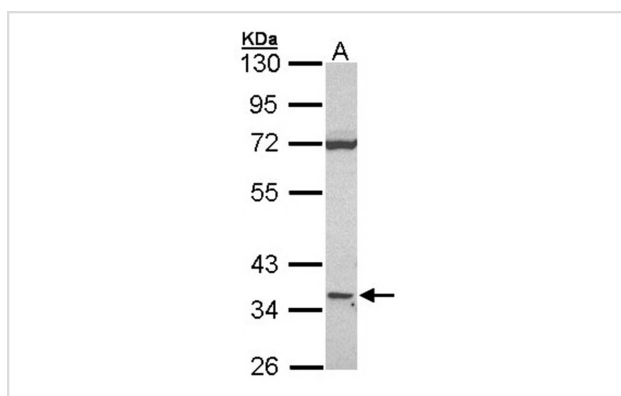
Product Name	CD1D antibody
Host Species	Rabbit
Clonality	Polyclonal
Purification	Purified by antigen-affinity chromatography.
Applications	WB
Species Reactivity	Hu
Immunogen Type	Recombinant protein
Immunogen Description	Recombinant protein fragment contain a sequence corresponding to a region within amino acids 56 and 287 of Human CD1D
Target Name	CD1D
Accession No.	Swiss-Prot:P15813Gene ID:912
Uniprot	P15813
GeneID	912;
Concentration	0.9mg/ml
Formulation	Supplied in 0.1M Tris-buffered saline with 10% Glycerol (pH7.0). 0.01% Thimerosal was added as a preservative.
Storage	Store at -20°C for long term preservation (recommended). Store at 4°C for short term use.

Application Details

Predicted MW: 38kd

Western blotting: 1:500-1:3000

Images



Sample (30 ug of whole cell lysate)

A: Raji

10% SDS PAGE

CD1D antibody diluted at 1: 1000

Background

This gene encodes a divergent member of the CD1 family of transmembrane glycoproteins, which are structurally related to the major histocompatibility complex (MHC) proteins and form heterodimers with beta-2-microglobulin. The CD1 proteins mediate the presentation of primarily

lipid and glycolipid antigens of self or microbial origin to T cells. The human genome contains five CD1 family genes organized in a cluster on chromosome 1. The CD1 family members are thought to differ in their cellular localization and specificity for particular lipid ligands. The protein encoded by this gene localizes to late endosomes and lysosomes via a tyrosine-based motif in the cytoplasmic tail. [provided by RefSeq]

Note: This product is for in vitro research use only