

SERPINA12 Antibody

Catalog No: #40100

Orders: order@signalwayantibody.comSupport: tech@signalwayantibody.com

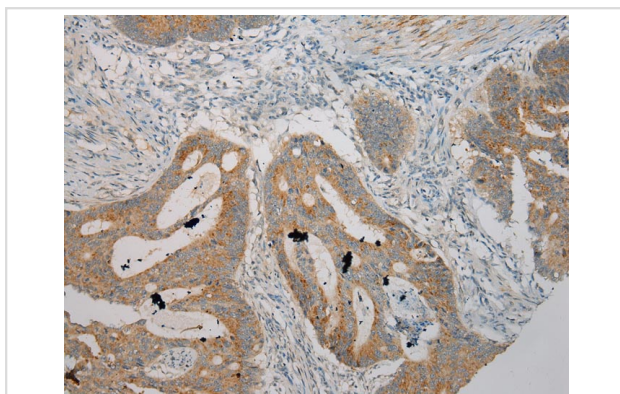
Description

Product Name	SERPINA12 Antibody
Host Species	Rabbit
Clonality	Polyclonal
Purification	Antigen affinity purification.
Applications	IHC
Species Reactivity	Hu
Specificity	The antibody detects endogenous levels of total SERPINA12 protein.
Immunogen Type	Protein
Immunogen Description	Fusion protein corresponding to residues near the C terminal of human serpin peptidase inhibitor, clade A (alpha-1 antitrypsin, antitrypsin), member 12
Target Name	SERPINA12
Other Names	OL-64
Accession No.	Swiss-Prot:Q8IW75Gene Accssion:BC040857
Uniprot	Q8IW75
GeneID	145264;
Concentration	2.1mg/ml
Formulation	Rabbit IgG in pH7.4 PBS, 0.05% NaN ₃ , 40% Glycerol.
Storage	Store at -20°C

Application Details

Immunohistochemistry: 1:100-1:200

Images



Immunohistochemical analysis of paraffin-embedded Human Colorectal cancer tissue using #40100 at dilution 1/100.

Background

Adipokine that modulates insulin action by specifically inhibiting its target protease KLK7 in white adipose tissues.

Note: This product is for in vitro research use only